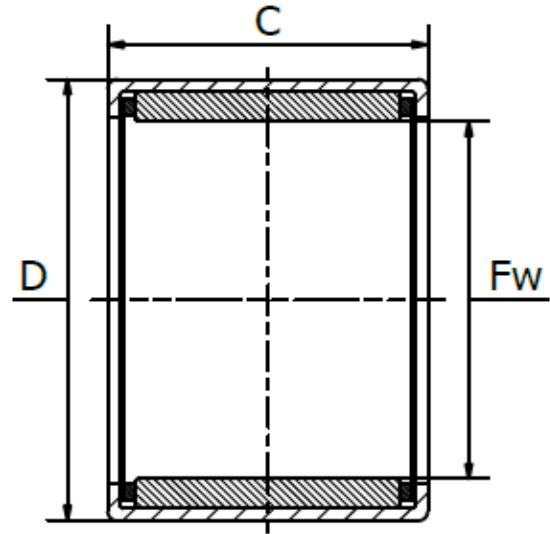


For use with IR inner rings or a ground and hardened shaft, tolerance h6, HRC 58-64, surface Ra0,2(Rz1), roundness and parallelism IT 3. Housing bore tolerance for steel and cast iron N6, aluminium R6, magnesium S6, surface Ra0,8(Rz4), roundness and parallelism IT 5/2.



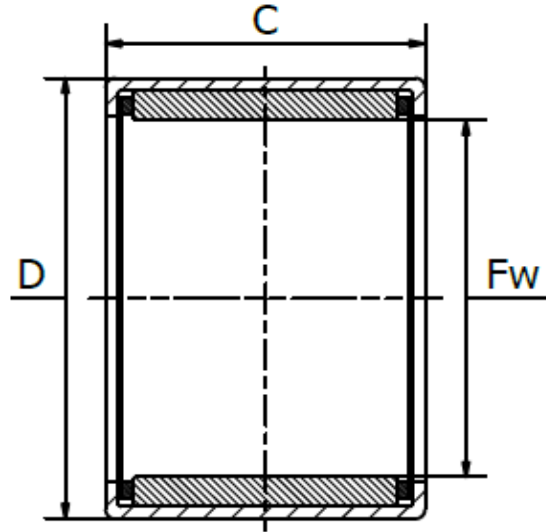
Item No.	Dimensions (mm)			Basic Load Ratings (N)		Max. Speed (RPM)		Weight (g)
	Fw	D	C	Dynamic C_r	Static C_{0r}	Oil	Grease	
HK0306	3	6,5	6	1.170	800	43.700	26.220	1,0
HK0408	4	8	8	1.690	1.240	39.000	23.400	1,6
HK0509	5	9	9	2.280	1.890	36.000	21.600	2,0
HK0606	6	10	6	2.100	1.700	34.500	20.700	1,8
HK0608	6	10	8	1.900	1.570	33.200	19.920	2,1
HK0609	6	10	9	2.700	2.470	33.200	19.920	2,2
HK0709	7	11	9	2.950	2.800	29.400	17.640	2,3
HK0808	8	12	8	2.600	2.470	26.600	15.960	2,7
HK0810	8	12	10	3.600	3.750	26.600	15.960	3,0
HK0908	9	13	8	3.370	3.560	23.700	14.220	3,0
HK0910	9	13	10	4.050	4.400	23.700	14.220	4,0
HK0912	9	13	12	5.040	6.000	23.700	14.220	4,6
HK1010	10	14	10	4.180	4.850	23.700	14.220	4,1
HK1012	10	14	12	5.200	6.450	21.850	13.110	4,8
HK1015	10	14	15	6.450	8.350	21.850	13.110	6,0
HK1210	12	16	10	4.700	5.900	21.850	13.110	4,6
HK1212	12	18	12	6.150	6.900	19.000	11.400	9,0
HK1311	13	19	11	6.300	6.300	18.000	10.800	8,5
HK1312	13	19	12	6.450	7.500	14.000	8.400	8,9
HK1412	14	20	12	6.800	8.000	17.000	10.200	10,5
HK1512	15	21	12	7.500	8.950	15.200	9.120	11,1



HK Series - Drawn Cup Needle Roller Bearings

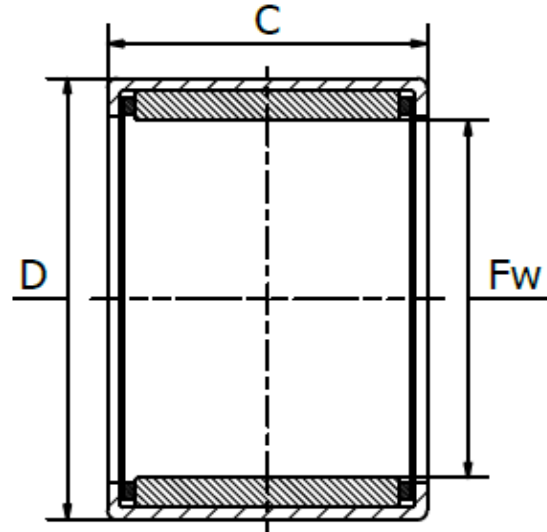
Open end, acc. to DIN 618/ISO 3245, max. temperature 140°C.

For use with IR inner rings or a ground and hardened shaft, tolerance h6, HRC 58-64, surface Ra0,2(Rz1), roundness and parallelism IT 3. Housing bore tolerance for steel and cast iron N6, aluminium R6, magnesium S6, surface Ra0,8(Rz4), roundness and parallelism IT 5/2.



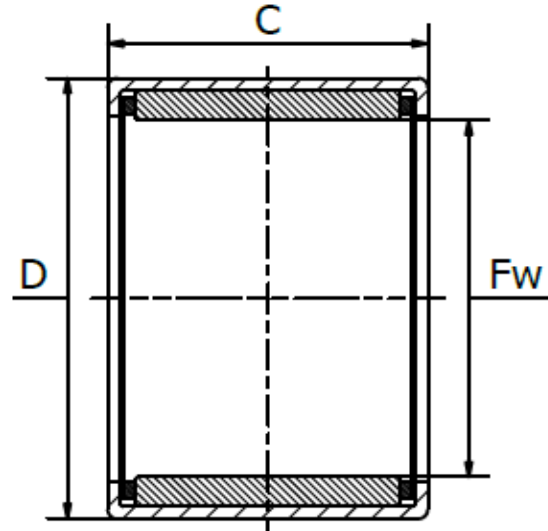
Item No.	Dimensions (mm)			Basic Load Ratings (N)		Max. Speed (RPM)		Weight (g)
	Fw	D	C	Dynamic C_r	Static C_{0r}	Oil	Grease	
HK1516	15	21	16	9.950	13.700	15.200	9.120	15,0
HK1522	15	21	22	12.700	18.500	15.200	9.120	20,4
HK1612	16	22	12	7.200	9.200	15.200	9.120	11,7
HK1616	16	22	16	10.300	14.500	14.200	8.520	15,8
HK1622	16	22	22	12.450	18.400	14.200	8.520	21,7
HK1712	17	23	12	7.500	9.750	13.300	7.980	12,2
HK1718	17	23	18	9.500	10.600	10.000	6.000	19,0
HK1812	18	24	12	7.700	10.350	12.350	7.410	13,1
HK1816	18	24	16	11.000	16.400	12.350	7.410	17,5
HK2010	20	26	10	6.100	7.800	11.400	6.840	11,8
HK2012	20	26	12	8.200	11.500	11.400	6.840	14,1
HK2016	20	26	16	12.000	19.100	11.400	6.840	19,3
HK2020	20	26	20	14.900	24.700	11.400	6.840	24,1
HK2030	20	26	30	20.700	38.000	11.400	6.840	34,7
HK2210	22	28	10	7.100	9.950	10.450	6.270	12,3
HK2212	22	28	12	8.650	12.700	10.450	6.270	15,0
HK2216	22	28	16	12.700	21.000	10.450	6.270	20,9
HK2220	22	28	20	15.650	27.550	10.450	6.270	26,2
HK2512	25	32	12	10.450	14.450	9.500	5.700	20,0
HK2516	25	32	16	14.800	22.800	9.500	5.700	27,3
HK2520	25	32	20	18.900	31.350	9.500	5.700	24,1

For use with IR inner rings or a ground and hardened shaft, tolerance h6, HRC 58-64, surface Ra0,2(Rz1), roundness and parallelism IT 3. Housing bore tolerance for steel and cast iron N6, aluminium R6, magnesium S6, surface Ra0,8(Rz4), roundness and parallelism IT 5/2.



Item No.	Dimensions (mm)			Basic Load Ratings (N)		Max. Speed (RPM)		Weight (g)
	Fw	D	C	Dynamic C_r	Static C_{0r}	Oil	Grease	
HK2524	25	32	24	21.100	38.450	9.500	5.700	39,7
HK2526	25	32	26	24.200	42.750	9.500	5.700	44,8
HK2538	25	32	38	32.300	62.700	9.500	5.700	64,7
HK2816	28	35	16	15.600	25.200	8.550	5.130	30,1
HK2820	28	35	20	19.850	34.200	8.550	5.130	37,6
HK3012	30	37	12	11.500	17.300	8.100	4.860	24,0
HK3016	30	37	16	16.350	27.550	8.100	4.860	32,0
HK3020	30	37	20	20.900	37.500	8.100	4.860	40,1
HK3022	30	37	22	24.500	45.000	8.100	4.860	42,0
HK3026	30	37	26	26.600	51.300	8.100	4.860	52,9
HK3038	30	37	38	35.600	75.000	8.100	4.860	76,1
HK3220	32	39	20	22.500	42.000	7.300	4.380	40,6
HK3224	32	39	24	25.500	52.000	7.300	4.380	50,7
HK3512	35	42	12	12.450	20.250	7.150	4.290	27,7
HK3516	35	42	16	17.750	31.850	6.200	3.720	36,9
HK3520	35	42	20	22.600	43.700	6.150	3.690	46,1
HK4012	40	47	12	13.300	23.100	6.200	3.720	31,1
HK4016	40	47	16	19.000	36.600	6.200	3.720	41,4
HK4020	40	47	20	24.250	49.400	6.200	3.720	51,8
HK4512	45	52	12	14.150	26.150	5.700	3.420	34,8
HK4516	45	52	16	20.250	40.850	5.700	3.420	46,2

For use with IR inner rings or a ground and hardened shaft, tolerance h6, HRC 58-64, surface Ra0,2(Rz1), roundness and parallelism IT 3. Housing bore tolerance for steel and cast iron N6, aluminium R6, magnesium S6, surface Ra0,8(Rz4), roundness and parallelism IT 5/2.



Item No.	Dimensions (mm)			Basic Load Ratings (N)		Max. Speed (RPM)		Weight (g)
	Fw	D	C	Dynamic C_r	Static C_{0r}	Oil	Grease	
HK4520	45	52	20	25.650	56.050	5.700	3.420	56,0
HK4538	45	55	38	27.600	61.000	5.300	3.180	135,0
HK5012	50	58	12	23.600	57.200	5.300	3.180	44,2
HK5020	50	58	20	29.450	59.850	4.750	2.850	72,0
HK5025	50	58	25	36.550	79.800	4.750	2.850	90,1
HK5038	50	58	38	27.770	63.100	4.600	2.760	140,0
HK5520	55	63	20	29.950	63.650	4.450	2.670	78,0
HK5528	55	63	28	41.800	97.850	4.080	2.448	111,0
HK6012	60	68	12	16.550	30.400	4.180	2.508	49,2
HK6020	60	68	20	31.800	71.250	4.180	2.508	86,0
HK6032	60	68	32	50.350	128.250	4.180	2.508	136,0