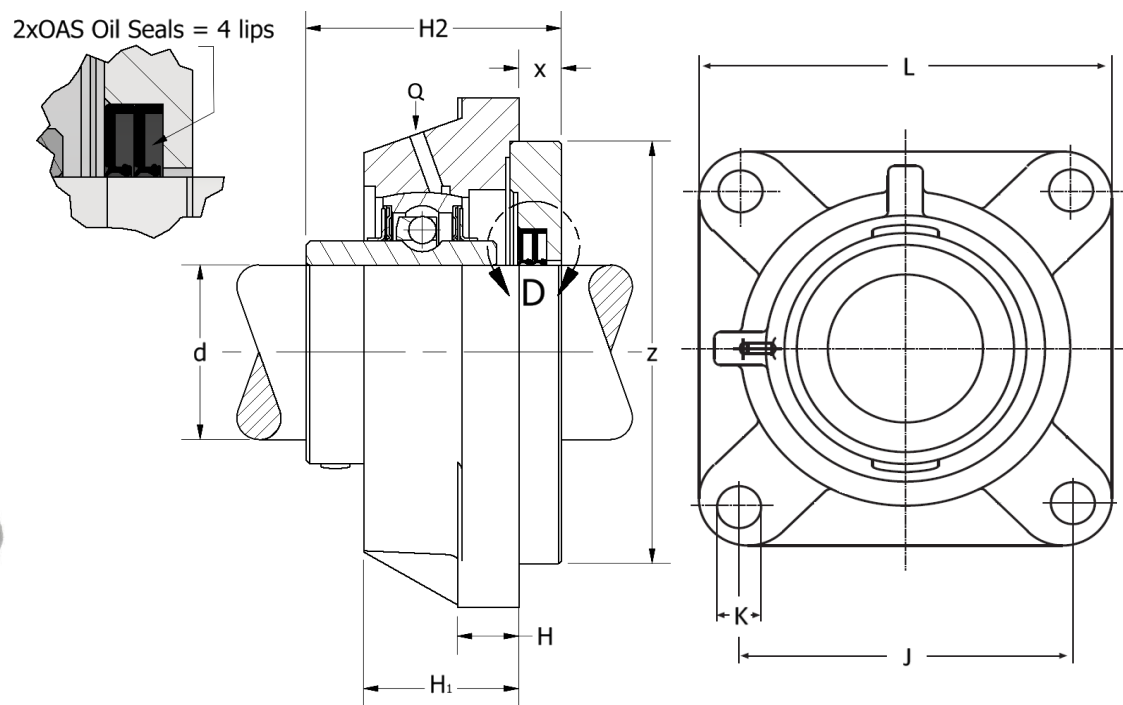




FWS .. U Spec.

Four-bolt flanged housing unit, set screw locking, double seals rear. Temperature range -30°C to +110°C



These units were developed for use under extreme conditions.

The doublelip seals with grease reservoir between seal and bearing ensures the best possible sealing under the worst conditions.

Supplied with two grease nipples, for relubrication of the bearing and for filling the grease reservoir.

Part No.	d	Dimensions (mm)								Load Rating			Bearing No.	Weight (kg)	Cover (Not included)
	mm	L	J	K	H	H ₁	H ₂	Z _{h9}	x	Q	Dynamic c kN	Static c ₀ kN			
FWS 30 U Spec.	30	108	82,5	11,5	16,0	32,0	55,5	95	14	M10x1	19,5	11,3	UC 206	1,8	KASK 06
FWS 40 U Spec.	40	130	102,0	14,0	18,0	37,0	70,2	115	15,8	Rp1/8	32,5	19,8	UC 208	3,3	KASK 08
FWS 50 U Spec.	50	143	111,0	14,0	16,5	47,5	66,5	81	5,5	Rp1/8	35,0	23,2	UC 210	3,2	KASK 10
FWS 60 U Spec.	60	175	143,0	18,0	19,5	53,0	87,7	145	14,5	M10x1,5	52,0	36,0	UC 212	6,3	-
FWS 65 U Spec.	65	188	150,0	20,0	23,0	60,0	83,2	159	13,5	Rp1/8	57,2	40,0	UC 213	7,9	-
FWS 70 U Spec.	70	188	150,0	20,0	23,0	60,0	96,0	159	13,5	Rp1/8	62,0	44,0	UC 214	8,2	-