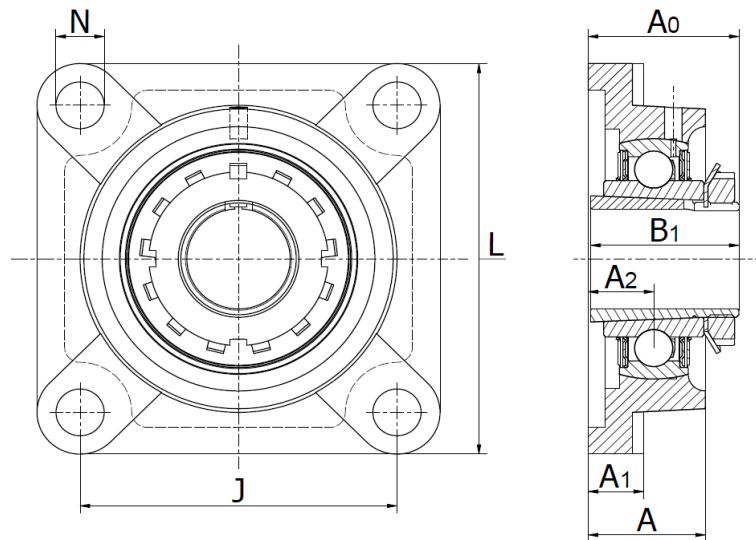




UKF 300 Series

four-bolt flanged housing units, cast iron.

for adapter sleeves (not included).



Product No.	Dimensions (mm)									Bolt	Bearing	Adapter Sleeve	Weight
	Shaft	L	J	A ₂	A ₁	A	N	A ₀	B ₁	size			(kg)
UKF 305	20	110	80	16	13	29	16	37,0	35	M14	UK 305	H 2305	1,1
UKF 306	25	125	95	18	15	32	16	40,5	38	M14	UK 306	H 2306	1,7
UKF 307	30	135	100	20	16	36	19	45,5	43	M16	UK 307	H 2307	2,1
UKF 308	35	150	112	23	17	40	19	50,0	46	M16	UK 308	H 2308	2,8
UKF 309	40	160	125	25	18	44	19	50,0	46	M16	UK 309	H 2309	3,4
UKF 310	45	175	132	28	19	48	23	60,5	55	M20	UK 310	H 2310	4,5
UKF 311	50	185	140	30	20	52	23	64,0	59	M20	UK 311	H 2311	5,3
UKF 312	55	195	150	33	22	56	23	69,5	62	M20	UK 312	H 2312	6,3
UKF 313	60	208	166	33	22	58	23	71,5	65	M20	UK 313	H 2313	7,8
UKF 315	65	236	184	39	25	66	25	81,5	73	M22	UK 315	H 2315	11,0
UKF 316	70	250	196	38	27	68	31	84,0	78	M27	UK 316	H 2316	14,0
UKF 317	75	260	204	44	27	74	31	92,0	82	M27	UK 317	H 2317	15,0
UKF 318	80	280	216	44	30	76	35	94,0	86	M30	UK 318	H 2318	19,0
UKF 319	85	290	228	59	30	94	35	111,5	90	M30	UK 319	H 2319	22,0
UKF 320	90	310	242	59	32	94	38	115,5	97	M33	UK 320	H 2320	27,0
UKF 322	100	340	266	60	35	96	41	121,0	105	M33	UK 322	H 2322	35,0
UKF 324	110	370	290	65	40	110	41	130,0	112	M36	UK 324	H 2324	48,0
UKF 326	115	410	320	65	45	115	41	133,0	121	M36	UK 326	H 2326	63,0
UKF 328	125	450	350	75	55	125	41	146,5	131	M36	UK 328	H 2328	90,0