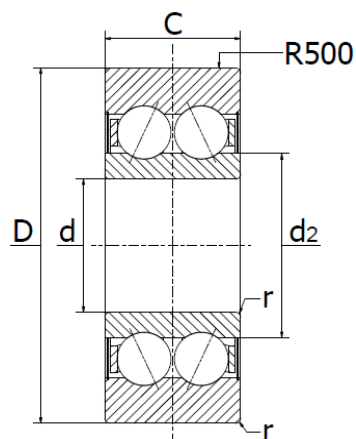
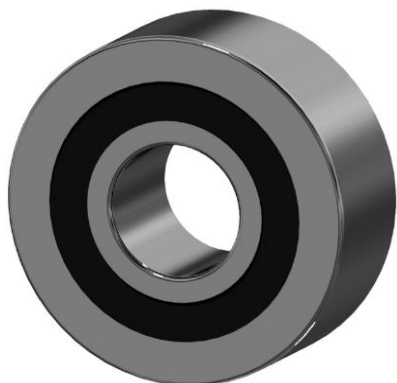




## LR5300NPPU Series - Track Rollers (LR5300-2HRS)

Double row, sealed on both sides, can also be supplied with 2Z (KDDU) seals on request. Curved outer race



### Legend:

- R** Crowing radius
- Crw** Effective dynamic load rating as track roller (radial)
- C0rw** Effective static load rating as track roller (radial)
- Curw** Fatigue limit load
- Fr per** Permissible dynamic radial load
- nDG** Speed (with continuous operation and grease lubrication)

Part No.	Dimensions (mm)						Mass kg	Load rating(N)				nDG (1/min)
	d	D	C	d2	R	rmin		Crw	C0rw	Curw	Fr per	
LR5303NPPU	17	52	22,2	27,1	500	1,0	0,21	19100	13700	690	11400	5700
LR5304NPPU	20	62	22,2	31,9	500	1,1	0,34	22200	17200	860	17200	4850
LR5305NPPU	25	72	25,4	37,6	500	1,1	0,50	28000	22500	1140	22500	4100
LR5306NPPU	30	80	30,2	44,4	500	1,1	0,67	36000	29500	1520	27000	3450
LR5307NPPU	35	90	34,9	49,6	500	1,5	0,97	45500	37000	1870	27000	3100
LR5308NPPU	40	100	36,5	56,8	500	1,5	1,20	53000	46000	2380	35500	2700