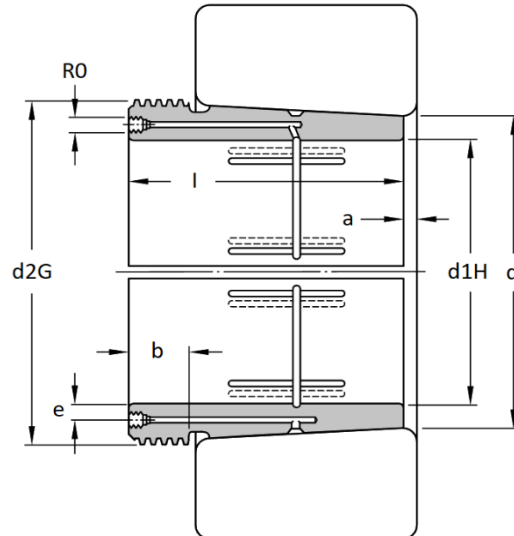
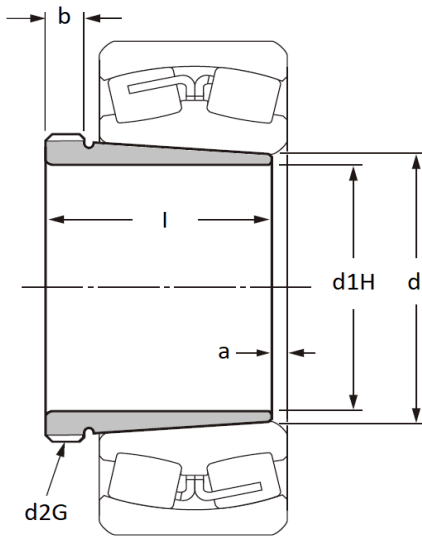


AH 24100 Series - Withdrawal Sleeves

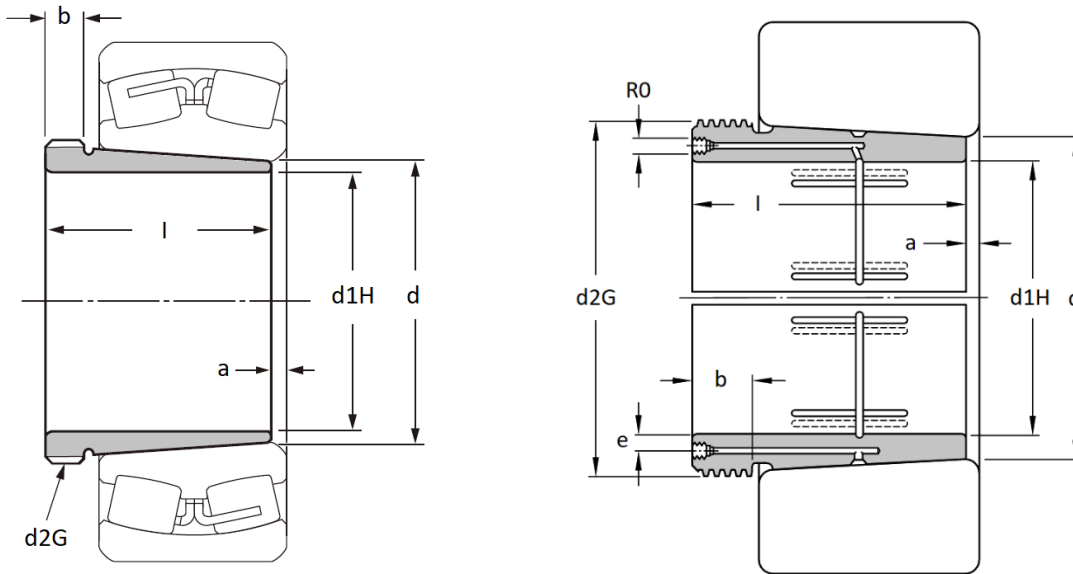
Main dimensions to DIN 5416, taper 1:30, use with shaft tolerances h7, h8 and h9. Prefix AOH = Prepared for oil injection, suffix G = different thread.



Part No.	Dimensions (mm)								Weight (kg)
	d1H	l	a	b	d	d2G	e	R0	
AH 24120	95	78	9	13	100	M105x2	-	-	0,63
AH 24122	105	82	9	13	110	M115x2	-	-	0,73
AH 24124	115	93	9	13	120	M130x2	-	-	1,02
AH 24126	125	94	10	14	130	M140x2	-	-	1,13
AH 24128	135	99	10	14	140	M150x2	-	-	1,29
AH 24130	145	115	11	15	150	M160x3	-	-	1,63
AH 24132	150	124	11	15	160	M170x3	-	-	3,04
AH 24134	160	125	11	16	170	M180x3	-	-	3,27
AH 24136	170	134	11	16	180	M190x3	-	-	3,74
AH 24138	180	146	13	18	190	M200x3	-	-	4,37
AH 24140	190	158	13	18	200	Tr210x4	-	-	5,02
AH 24144	200	170	14	20	220	Tr230x4	-	-	10,30
AOH 24144	200	170	14	20	220	Tr230x4	8	M6	10,30
AH 24148	220	180	15	20	240	Tr260x4	-	-	12,60
AOH 24148	220	180	15	20	240	Tr260x4	8,5	G1/8	12,60
AH 24152	240	202	16	22	260	Tr280x4	-	-	15,50
AOH 24152	240	202	16	22	260	Tr280x4	8,5	G1/8	15,50
AH 24156	260	202	17	22	280	Tr300x4	-	-	16,70
AOH 24156	260	202	17	22	280	Tr300x4	8,5	G1/8	16,70
AOH 24160	280	224	18	24	300	Tr320x5	8,5	G1/8	20,10
AH 24160	280	224	18	24	300	Tr320x5	-	-	20,10
AOH 24164	300	242	18	24	320	Tr340x5	8,5	G1/8	23,40
AOH 24168	320	269	19	26	340	Tr360x5	8,5	G1/8	28,00
AOH 24172	340	269	20	26	360	Tr380x5	8,5	G1/8	29,70
AOH 24176	360	271	20	28	380	Tr400x5	8,5	G1/8	31,80
AOH 24180	380	278	20	28	400	Tr420x5	8,5	G1/8	34,40

AH 24100 Series - Withdrawal Sleeves

Main dimensions to DIN 5416, taper 1:30, use with shaft tolerances h7, h8 and h9. Prefix AOH = Prepared for oil injection, suffix G = different thread.



Part No.	Dimensions (mm)								Weight (kg)
	d1H	l	a	b	d	d2G	e	R0	
AOH 24184	400	310	22	30	420	Tr440x5	8,5	G1/8	41,0
AOH 24188	420	310	22	30	440	Tr460x5	8,5	G1/8	42,9
AOH 24192	440	332	23	32	460	Tr480x5	8,5	G1/8	48,7
AOH 24196	460	343	25	35	480	Tr500x5	8,5	G1/8	52,9
AOH 24196 G	460	340	23	32	480	Tr500x5	8,5	G1/8	52,2