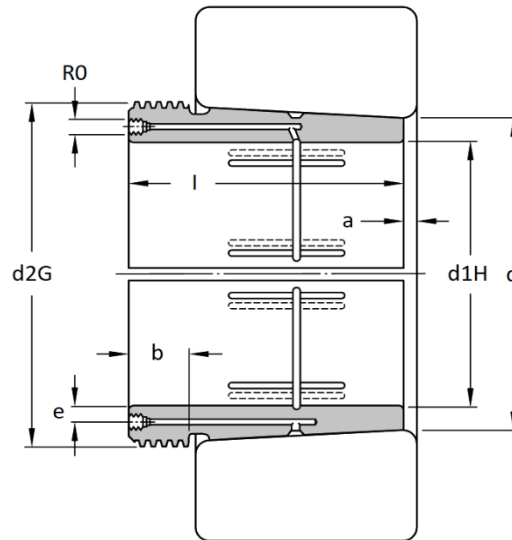
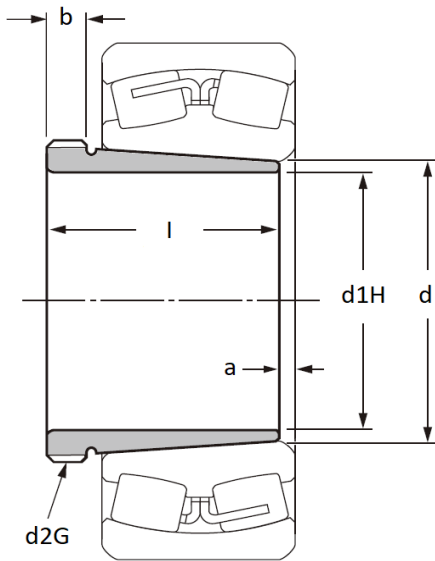
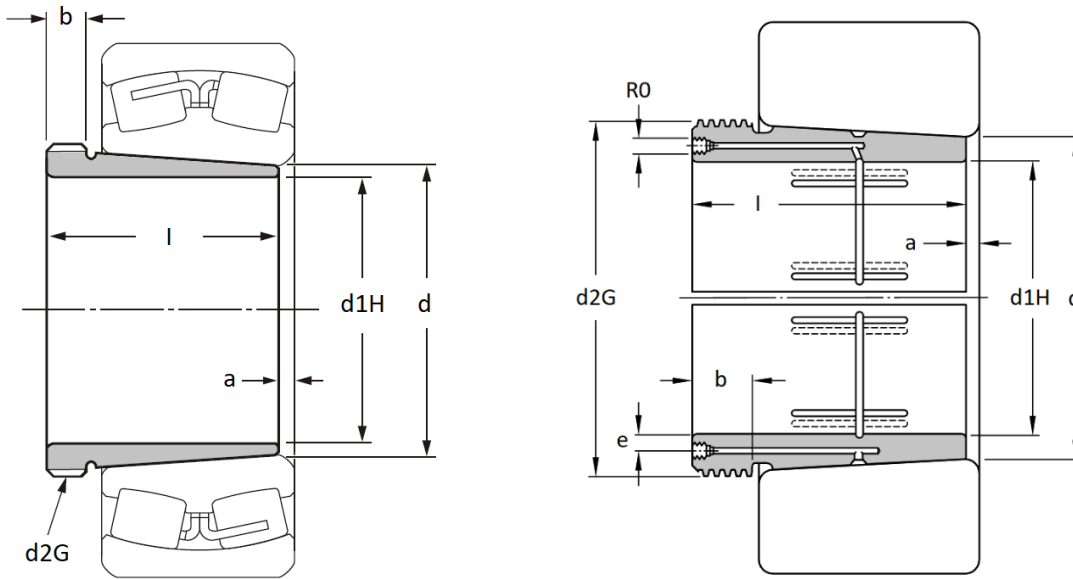


AH & AHX 3000 Series - Withdrawal Sleeves

Main dimensions to DIN 5416, taper 1:12, use with shaft tolerances h7, h8 and h9. Prefix AOH = Prepared for oil injection, suffix G = different thread.



Part No.	Dimensions (mm)								Weight (kg)
	d1H	l	a	b	d	d2G	e	R0	
AHX 3024	115	60	4	13	120	M130x2	-	-	0,77
AHX 3026	125	67	4	14	130	M140x2	-	-	0,94
AHX 3028	135	68	5	14	140	M150x2	-	-	1,03
AHX 3030	145	72	5	15	150	M160x3	-	-	1,18
AH 3032	150	77	5	16	160	M170x3	-	-	2,09
AOH 3032	150	77	5	16	160	M170x3	4,2	M6	2,09
AOH 3034	160	85	5	17	170	M180x3	4,2	M6	2,48
AH 3034	160	85	5	17	170	M180x3	-	-	2,48
AH 3036	170	92	6	17	180	M190x3	-	-	2,87
AOH 3036	170	92	6	17	180	M190x3	4,2	M6	2,87
AOH 3038	180	96	6	18	190	Tr205x4	4,2	M6	3,42
AOH 3038 G	180	96	6	18	190	M200x3	4,2	M6	3,19
AH 3038 G	180	96	6	18	190	M200x3	-	-	3,19
AH 3038	180	96	6	18	190	Tr205x4	-	-	3,42
AH 3040	190	102	6	19	200	Tr215x4	-	-	3,86
AH 3040 G	190	102	6	19	200	Tr210x4	-	-	3,62
AOH 3040 G	190	102	6	19	200	Tr210x4	4,2	M6	3,62
AOH 3040	190	102	6	19	200	Tr215x4	4,2	M6	3,86
AOH 3044	200	111	6	20	220	Tr235x4	8,5	G1/8	7,47
AOH 3044 G	200	111	6	20	220	Tr230x4	8,5	G1/8	7,18
AH 3044 G	200	111	6	20	220	Tr230x4	-	-	7,18
AH 3044	200	111	6	20	220	Tr235x4	-	-	7,47
AH 3048	220	116	7	21	240	Tr260x4	-	-	8,92
AOH 3048	220	116	7	21	240	Tr260x4	8,5	G1/8	8,92



Part No.	Dimensions (mm)								Weight (kg)
	d1H mm	l	a	b	d	d2G	e	R0	
AOH 3052	240	128	7	23	260	Tr280x4	8,5	G1/8	10,8
AH 3052	240	128	7	23	260	Tr280x4	-	-	10,8
AH 3056	260	131	8	24	280	Tr300x4	-	-	12,0
AOH 3056	260	131	8	24	280	Tr300x4	8,5	G1/8	12,0
AH 3060	280	145	8	26	300	Tr320x5	-	-	14,4
AOH 3060	280	145	8	26	300	Tr320x5	8,5	G1/8	14,4
AOH 3064	300	149	8	27	320	Tr345x5	8,5	G1/8	16,5
AOH 3064 G	300	149	8	27	320	Tr340x5	8,5	G1/8	15,9
AOH 3068 G	320	162	9	28	340	Tr360x5	8,5	G1/8	18,6
AOH 3068	320	162	9	28	340	Tr365x5	8,5	G1/8	19,2
AOH 3072 G	340	167	9	30	360	Tr380x5	8,5	G1/8	20,5
AOH 3072	340	167	9	30	360	Tr385x5	8,5	G1/8	21,2
AOH 3076	360	170	10	31	380	Tr410x5	8,5	G1/8	23,6
AOH 3076 G	360	170	10	31	380	Tr400x5	8,5	G1/8	22,1
AOH 3080 G	380	183	10	33	400	Tr420x5	8,5	G1/8	25,4
AOH 3080	380	183	10	33	400	Tr430x5	8,5	G1/8	27,1
AOH 3084	400	186	10	34	420	Tr450x5	8,5	G1/8	29,1
AOH 3084 G	400	186	10	34	420	Tr440x5	8,5	G1/8	27,2
AOHX 3088 G	420	194	11	35	440	Tr460x5	8,5	G1/8	30,0
AOHX 3088	420	194	11	35	440	Tr470x5	8,5	G1/8	31,9
AOHX 3092	440	202	11	37	460	Tr490x5	8,5	G1/8	35,1
AOHX 3092 G	440	202	11	37	460	Tr480x5	8,5	G1/8	32,9
AOHX 3096	460	205	12	38	480	Tr520x6	8,5	G1/8	39,7
AOHX 3096 G	460	205	12	38	480	Tr500x5	8,5	G1/8	35,0