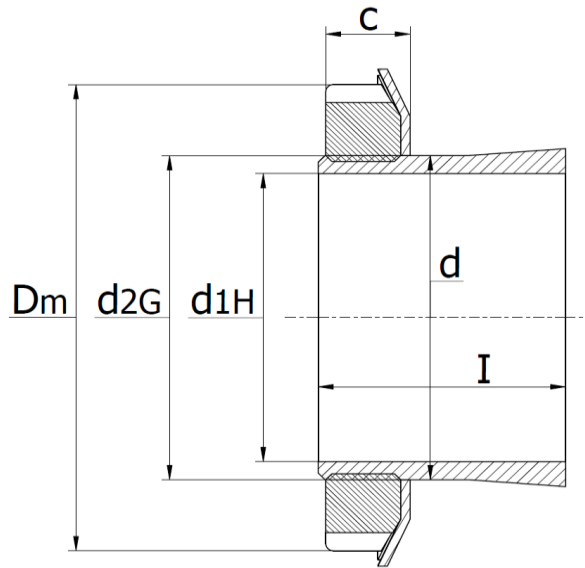




H 200 Series - Adapter Sleeves

main dimensions to DIN 5415, taper 1:12, use with shaft tolerances h7, h8 and h9. Incl. lock nut and retaining ring



Part No.	d_{1H}	Dimensions (mm)					Nut	Retaining Ring
	mm	D_m	I	c	d	d_{2G}		
H 203	14	28	21	6	17	M17x1	KM3	MB3
H 204	17	32	24	7	20	M20x1	KM4	MB4
H 205	20	38	26	9	25	M25x1,5	KM5	MB5
H 206	25	45	27	9	30	M30x1,5	KM6	MB6
H 207	30	52	29	10	35	M35x1,5	KM7	MB7
H 208	35	58	31	11	40	M40x1,5	KM8	MB8
H 209	40	65	33	12	45	M45x1,5	KM9	MB9
H 210	45	70	35	13	50	M50x1,5	KM10	MB10
H 211	50	75	37	13	55	M55x2	KM11	MB11
H 212	55	80	38	13	60	M60x2	KM12	MB12
H 213	60	85	40	14	65	M65x2	KM13	MB13
H 214	60	92	41	14	70	M70x2	KM14	MB14
H 215	65	98	43	15	75	M75x2	KM15	MB15
H 216	70	105	46	17	80	M80x2	KM16	MB16
H 217	75	110	50	18	85	M85x2	KM17	MB17
H 218	80	120	52	18	90	M90x2	KM18	MB18
H 219	85	125	55	19	95	M95x2	KM19	MB19
H 220	90	130	58	20	100	M100x2	KM20	MB20
H 221	95	140	60	20	105	M105x2	KM21	MB21
H 222	100	145	63	21	110	M110x2	KM22	MB22