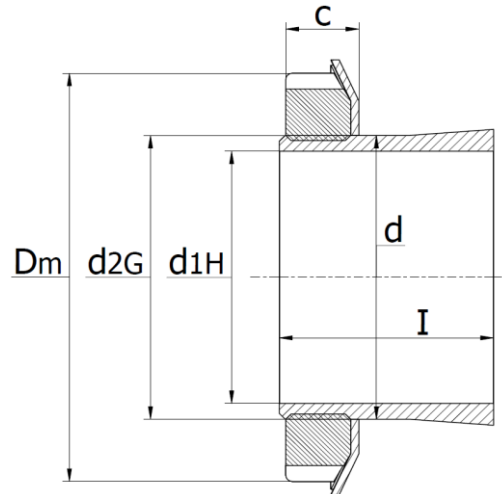




H 2300 Series - Adapter Sleeves

main dimensions to DIN 5415, taper 1:12, use with shaft tolerances h7, h8 and h9.
Incl. lock nut and retaining ring



Part No.	d_{1H}		Dimensions (mm)				Nut	Retaining Ring
	mm	D_m	I	c	d	d_{2G}		
H 2304	17	32	31	7	20	M20x1	KM4	MB4
H 2305	20	38	35	9	25	M25x1,5	KM5	MB5
H 2306	25	45	38	9	30	M30x1,5	KM6	MB6
H 2307	30	52	43	10	35	M35x1,5	KM7	MB7
H 2308	35	58	46	11	40	M40x1,5	KM8	MB8
H 2309	40	65	50	12	45	M45x1,5	KM9	MB9
H 2310	45	70	55	13	50	M50x1,5	KM10	MB10
H 2311	50	75	59	13	55	M55x2	KM11	MB11
H 2312	55	80	62	13	60	M60x2	KM12	MB12
H 2313	60	85	65	14	65	M65x2	KM13	MB13
H 2314	60	92	68	14	70	M70x2	KM14	MB14
H 2315	65	98	73	15	75	M75x2	KM15	MB15
H 2316	70	105	78	17	80	M80x2	KM16	MB16
H 2317	75	110	82	18	85	M85x2	KM17	MB17
H 2318	80	120	86	18	90	M90x2	KM18	MB18
H 2319	85	125	90	19	95	M95x2	KM19	MB19
H 2320	90	130	97	20	100	M100x2	KM20	MB20
H 2321	95	140	101	20	105	M105x2	KM21	MB21
H 2322	100	145	105	21	110	M110x2	KM22	MB22
H 2324	110	155	112	22	120	M120x2	KM24	MB24
H 2326	115	165	121	23	130	M130x2	KM26	MB26
H 2328	125	180	131	24	140	M140x2	KM28	MB28
H 2330	135	195	139	26	150	M150x2	KM30	MB30
H 2332	140	210	147	28	160	M160x3	KM32	MB32
H 2334	150	220	154	29	170	M170x3	KM34	MB34
H 2336	160	230	161	30	180	M180x3	KM36	MB36
H 2338	170	240	169	31	190	M190x3	KM38	MB38
H 2340	180	250	176	32	200	M200x3	KM40	MB40