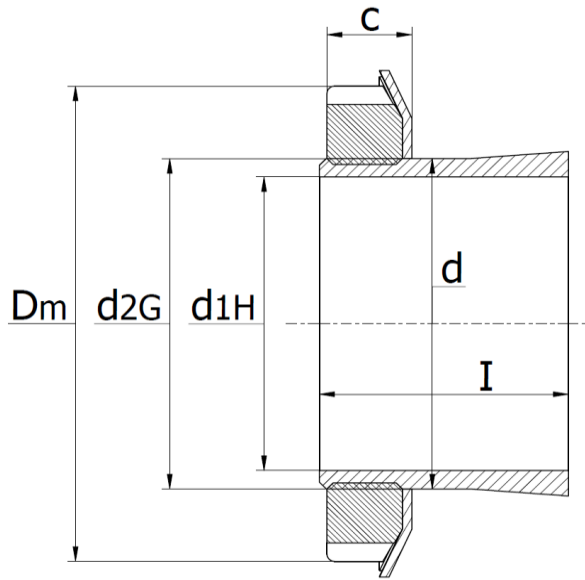




H 300 Series - Adapter Sleeves

main dimensions to DIN 5415, taper 1:12, use with shaft tolerances h7, h8 and h9. Incl. lock nut and retaining ring



Part No.	Dimensions (mm)						Nut	Retaining Ring
	d_{1H} mm	D_m	I	c	d	d_{2G}		
H 304	17	32	28	7	20	M20x1	KM4	MB4
H 305	20	38	29	9	25	M25x1,5	KM5	MB5
H 306	25	45	31	9	30	M30x1,5	KM6	MB6
H 307	30	52	35	10	35	M35x1,5	KM7	MB7
H 308	35	58	36	11	40	M40x1,5	KM8	MB8
H 309	40	65	39	12	45	M45x1,5	KM9	MB9
H 310	45	70	42	13	50	M50x1,5	KM10	MB10
H 311	50	75	45	13	55	M55x2	KM11	MB11
H 312	55	80	47	13	60	M60x2	KM12	MB12
H 313	60	85	50	14	65	M65x2	KM13	MB13
H 314	60	92	52	14	70	M70x2	KM14	MB14
H 315	65	98	55	15	75	M75x2	KM15	MB15
H 316	70	105	59	17	80	M80x2	KM16	MB16
H 317	75	110	63	18	85	M85x2	KM17	MB17
H 318	80	120	65	18	90	M90x2	KM18	MB18
H 319	85	125	68	19	95	M95x2	KM19	MB19
H 320	90	130	71	20	100	M100x2	KM20	MB20
H 321	95	140	74	20	105	M105x2	KM21	MB21
H 322	100	145	77	21	110	M110x2	KM22	MB22