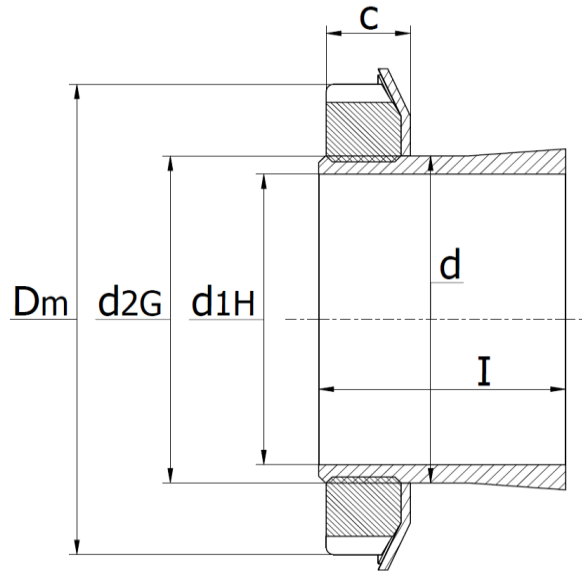




## 3000 Series - Adapter Sleeves

main dimensions to DIN 5415, taper 1:12, use with shaft tolerances h7, h8 and h9.  
Incl. lock nut and retaining ring



Part No.	Dimensions (mm)						Nut	Retaining Ring	Mass (kg)
	d <sub>1H</sub> mm	D <sub>m</sub>	I	c	d	d <sub>2G</sub>			
H 3024	110	145	72	22	120	M120x2	KML24	MBL24	2,0
H 3026	115	155	80	23	130	M130x2	KML26	MBL26	3,0
H 3028	125	165	82	24	140	M140x2	KML28	MBL28	3,3
H 3030	135	180	87	26	150	M150x2	KML30	MBL30	4,0
H 3032	140	190	93	27,5	160	M160x3	KML32	MBL32	5,2
H 3034	150	200	101	28,5	170	M170x3	KML34	MBL34	6,2
H 3036	160	210	109	29,5	180	M180x3	KML36	MBL36	7,1
H 3038	170	220	112	30,5	190	M190x3	KML38	MBL38	7,5
H 3040	180	240	120	31,5	200	M200x3	KML40	MBL40	9,2
H 3044	200	260	126	30	220	Tr220x4	HM3044	MS3044	10,3
H 3048	220	290	133	34	240	Tr240x4	HM3048	MS3048	13,2
H 3052	240	310	145	34	260	Tr260x4	HM3052	MS3052	16,0
H 3056	260	330	152	38	280	Tr280x4	HM3056	MS3056	18,5
H 3060	280	360	168	42	300	Tr300x4	HM3060	MS3060	23,8
H 3064	300	380	171	42	320	Tr320x5	HM3064	MS3064	24,6
H 3068	320	400	187	45	340	Tr340x5	HM3068	MS3068	28,7
H 3072	340	420	188	45	360	Tr360x5	HM3072	MS3072	31,5
H 3076	360	450	193	48	380	Tr380x5	HM3076	MS3076	36,1