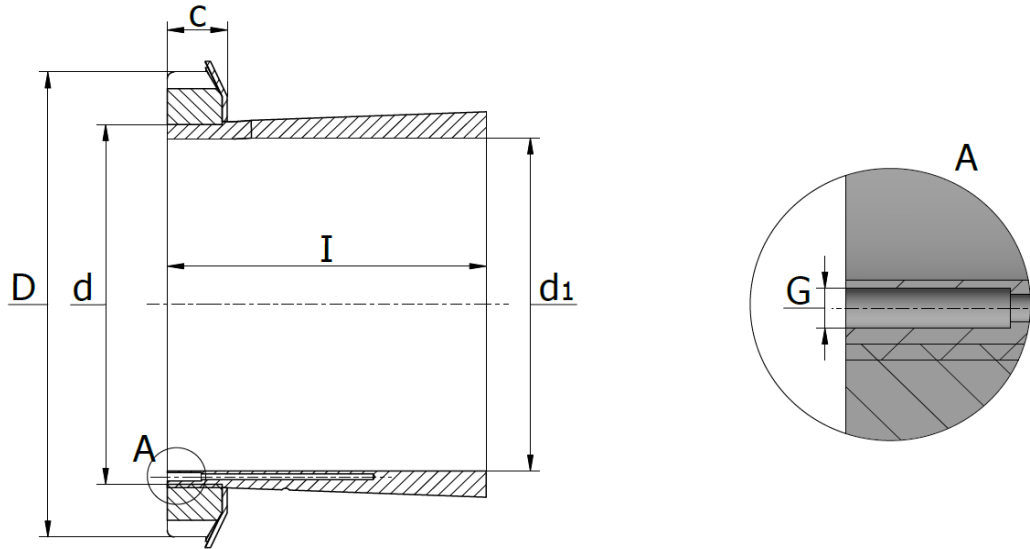


H 30.. H Series (OH 30..)

Hydraulic Adapter Sleeves for 230.. Series Spherical bearings, use with shaft tolerances h7, h8 and h9. Incl. lock nut and retaining ring



Product No.	Dimension (mm)						Nut	Lock Washer	G	Weight (kg)
	d ₁	d	I	D	c	c ₁				
H 3032 H	140	160	93	190	27,5	-	KML32	MBL32	M6	5,2
H 3034 H	150	170	101	200	28,5	-	KML34	MBL34	M6	6,0
H 3036 H	160	180	109	210	29,5	-	KML36	MBL36	M6	6,9
H 3038 H	170	190	112	220	30,5	-	KML38	MBL38	M6	7,5
H 3040 H	180	200	120	240	31,5	-	KML40	MBL40	M6	9,2
H 3044 H	200	220	128	260	30,0	41	HM3044	MS3044	M6	10,3
H 3048 H	220	240	133	290	34,0	46	HM3048	MS3048	M6	13,2
H 3052 H	240	260	147	310	34,0	46	HM3052	MS3052	M6	15,3
H 3056 H	260	280	152	330	38,0	50	HM3056	MS3056	M6	17,7
H 3060 H	280	300	168	360	42,0	54	HM3060	MS3060	M6	22,8
H 3064 H	300	320	171	380	42,0	55	HM3064	MS3064	M6	24,6
H 3068 H	320	340	187	400	45,0	58	HM3068	MS3068	M6	28,7
H 3072 H	340	360	188	420	45,0	58	HM3072	MS3072	M6	30,5
H 3076 H	360	380	193	450	48,0	62	HM3076	MS3076	M6	35,8
H 3080 H	380	400	210	470	52,0	66	HM3080	MS3080	M6	41,3
H 3084 H	400	420	212	490	52,0	66	HM3084	MS3084	M6	43,7
H 3088 H	410	440	228	520	60,0	77	HM3088	MS3088	M8	65,2
H 3092 H	430	460	234	540	60,0	77	HM3092	MS3092	M8	69,5
H 3096 H	450	480	237	560	60,0	77	HM3096	MS3096	M8	73,3