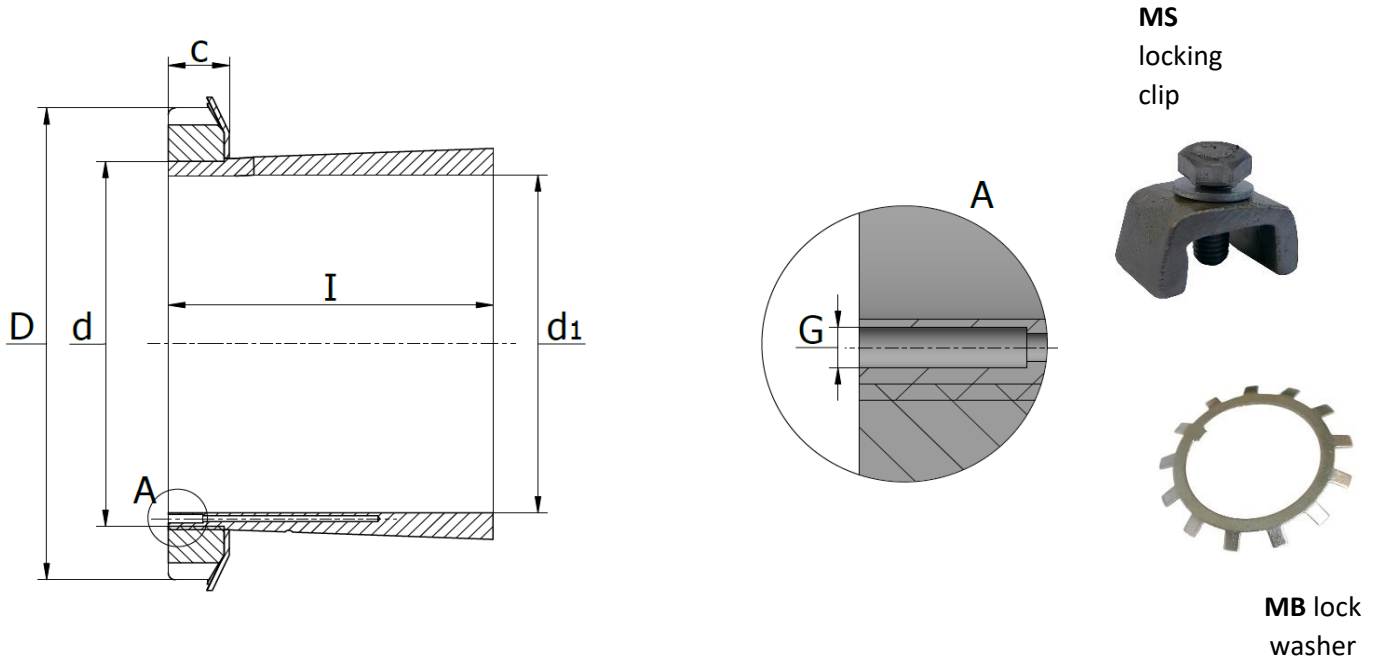


H 31.. H Series (OH 31..)

Hydraulic Adapter Sleeves for 231.. Series Spherical bearings, use with shaft tolerances h7, h8 and h9. Incl. lock nut and retaining ring



Product No.	Dimension (mm)						Nut	Lock Washer	G	Weight (kg)
	d ₁	d	I	D	c	c ₁				
H 3132 H	140	160	119	210	28	-	KM32	MB32	M6	7,7
H 3134 H	150	170	122	220	29	-	KM34	MB34	M6	8,4
H 3136 H	160	180	131	230	30	-	KM36	MB36	M6	9,5
H 3138 H	170	190	141	240	31	-	KM38	MB38	M6	11,0
H 3140 H	180	200	150	250	32	-	KM40	MB40	M6	12,0
H 3144 H	200	220	161	280	32	44	HM3144	MS3144	M6	14,7
H 3148 H	220	240	172	300	34	46	HM3148	MS3148	M6	17,3
H 3152 H	240	260	190	330	36	49	HM3152	MS3152	M6	22,0
H 3156 H	260	280	195	350	38	51	HM3156	MS3156	M6	24,5
H 3160 H	280	300	208	380	40	53	HM3160	MS3160	M6	30,2
H 3164 H	300	320	226	400	42	56	HM3164	MS3164	M6	34,9
H 3168 H	320	340	254	440	55	72	HM3168	MS3168	M6	49,5
H 3172 H	340	360	259	460	58	75	HM3172	MS3172	M6	54,2
H 3176 H	360	380	264	490	60	77	HM3176	MS3176	M6	61,7
H 3180 H	380	400	272	520	62	82	HM3180	MS3180	M6	70,6
H 3184 H	400	420	304	540	70	90	HM3184	MS3184	M6	84,2
H 3188 H	410	440	307	560	70	90	HM3188	MS3188	M8	104,0
H 3192 H	430	460	326	580	75	95	HM3192	MS3192	M8	116,0
H 3196 H	450	480	335	620	75	95	HM3196	MS3196	M8	133,0