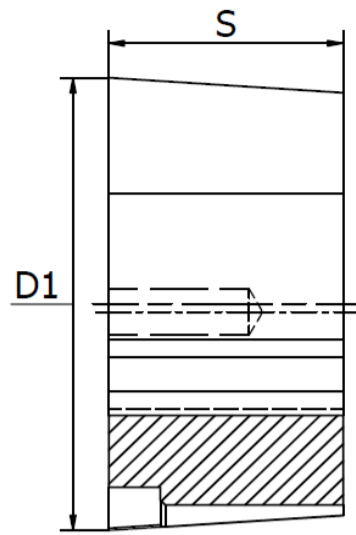


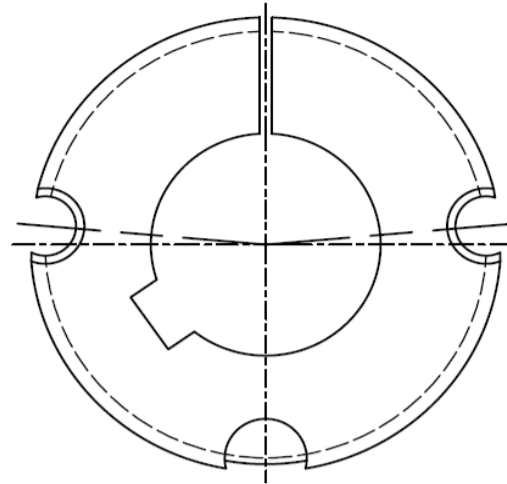


Taper Bushes

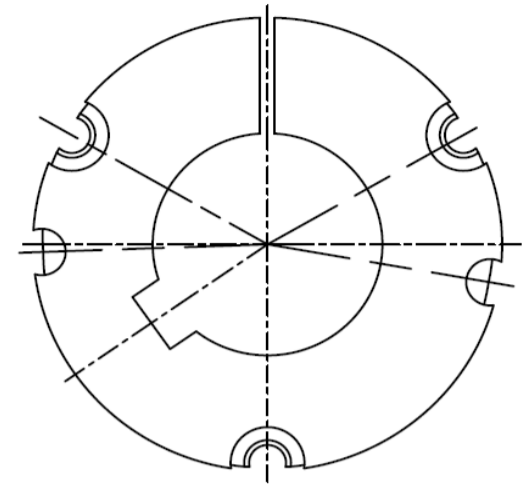
Taper Bushes makes assembly and disassembly of V-belt pulleys, sprockets, couplings, weld-on hubs and pulleys quick and easy. Available in metric- and inch sizes. We offer certain sizes in a reinforced version of steel.



1. DIN916 Hex key set screw



2. DIN912 Hex key head screws



Standard metric bore series

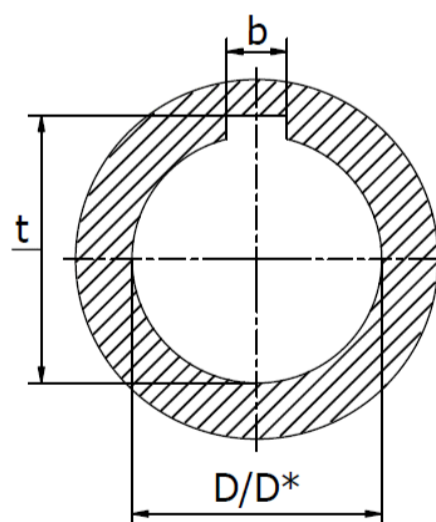
Material: Cast Iron (EN-GJL-250 UNI EN 1561)

Example of suffix : TB 1008-10

Bush type	Dimensions (mm)		Type	Max. Torque (Nm)	Screws	Screw tightening torque (Nm)	Weight (kg)
	Bore (ISO E 8)						
1008	9 10 11 12 14 15 16 18 19 20 22 24* 25*		1	136	1/4" x 1/2"	5,6	0,16
1108	9 10 11 12 14 15 16 18 19 20 22 24 25 28*		1	147	1/4" x 1/2"	5,6	0,16
1210	11 12 14 15 16 18 19 20 22 24 25 28 30 32		1	407	3/8" x 5/8"	19,6	0,32
1215	14 19 20 24 25 28		1	407	3/8" x 5/8"	19,6	0,50
1610	14 15 16 18 19 20 22 24 25 28 30 32 35 38 40 42*		1	486	3/8" x 5/8"	19,6	0,41
1615	14 16 18 19 20 22 24 25 28 30 32 35 38 40 42*		1	486	3/8" x 5/8"	19,6	0,60
2012	14 16 18 19 20 22 24 25 28 30 32 35 38 40 42 45 48 50		1	808	7/16" x 7/8"	30,4	0,75
2517	16 18 19 20 22 24 25 28 30 32 35 38 40 42 45 48 50 55 60 65*		1	1310	1/2" x 1"	48,0	1,06
3020	25 28 30 32 35 38 40 42 45 48 50 55 60 65 70 75		1	2710	5/8" x 1"1/4	90,0	2,50
3030	35 38 40 42 45 48 50 55 60 65 70 75		1	2710	5/8" x 1"1/4	90,0	3,75
3525	35 38 40 42 45 48 50 55 60 65 70 75 80 85 90		2	5060	1/2" x 1"1/2	112,0	4,20
3535	35 38 40 42 45 48 50 55 60 65 70 75 80 85 90		2	5060	1/2" x 1"1/2	112,0	5,13
4030	40 42 45 48 50 55 60 65 70 75 80 85 90 100		2	8740	5/8" x 1"3/4	169,0	6,75
4040	40 42 45 48 50 55 60 65 70 75 80 85 90 95 100		2	8740	5/8" x 1"3/4	169,0	7,68
4535	60 70 75 85 90 100 110 120 125		2	10750	3/4" x 2"	192,0	8,95
4545	55 60 65 70 75 80 85 90 95 100		2	12400	3/4" x 2"	192,0	10,56
5040	55 60 65 70 75 80 85 90 95 100		2	14200	7/8" x 2"1/4	271,0	14,20
5050	70 75 80 85 90 95 100 105 110 115 120 125		2	14200	7/8" x 2"1/4	271,0	15,17

Dimension of the keyways (UNI 6604 DIN 6885)

D	b	Js9	t
Over 10 to 12	4		D + 1,8
» 12 » 17	5	± 0,015	D + 2,3
» 17 » 22	6		D + 2,8
» 22 » 30	8		D + 3,3
» 30 » 38	10	± 0,018	D + 3,3
» 38 » 44	12		D + 3,3
» 44 » 50	14		D + 3,8
» 50 » 58	16	± 0,021	D + 4,3
» 58 » 65	18		D + 4,4
» 65 » 75	20		D + 4,9
» 75 » 85	22		D + 5,4
» 85 » 95	25	± 0,026	D + 5,4
» 95 » 110	28		D + 6,4
» 110 » 130	32	± 0,031	D + 7,4



D*	b	T
24*	8	D + 1,3
25*	8	D + 1,3
28*	8	D + 1,3
42*	12	D + 1,3
65*	18	D + 2,8

Shafts with a diameter tolerance of +0,05 / -0,125 mm are recommended. Best results are achieved with a ISO h6 tolerance. For shafts up to 100 mm diameter, an affordable forged h9 shaft can be used. To be used with or without key.