

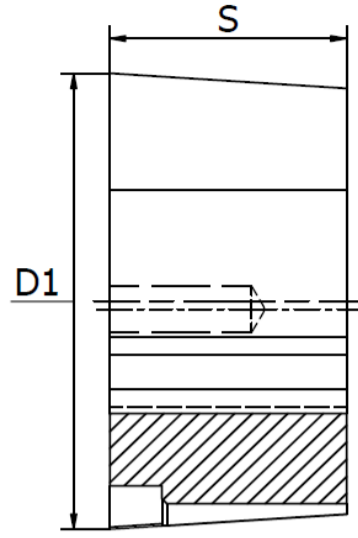


## Taper Bushes

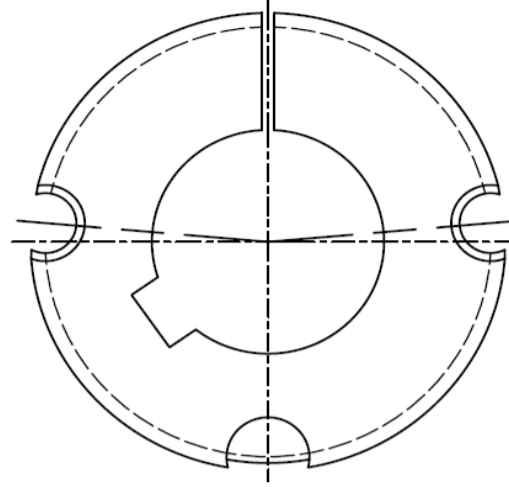
Taper Bushes makes assembly and disassembly of V-belt pulleys, sprockets, couplings, weld-on hubs and pulleys quick and easy. Available in metric- and inch sizes. We offer certain sizes in a reinforced version of steel.



Standard inch bore series

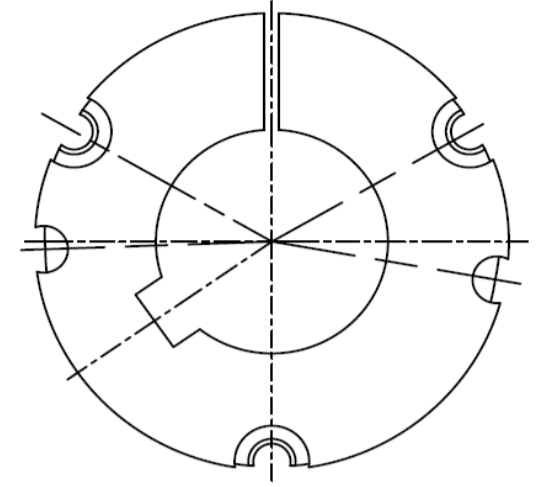


1. DIN916 Hex key set screw



Material: cast Iron (EN-GJL-250 UNI EN 1561)

2. DIN912 Hex key head screws



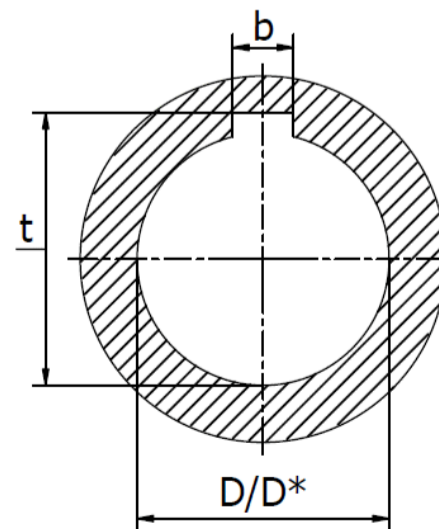
Example of suffix : TB 1108-1 1-8"

| Bush type | Dimensions  |       | Type  | Max. Torque (Nm) | Screws | Screw tightening torque (Nm) | Weight (kg) |
|-----------|---|-------|-------|------------------|--------|------------------------------|-------------|
|           | Bore in inches (ISO E 8)  | D1 mm |       |                  |        |                              |             |
| 1008      | 3/8"   1/2"   5/8"   3/4"   7/8"   1" *   | 35,0  | 22,3  | 1                | 136    | 1/4" x 1/2"                  | 0,16        |
| 1108      | 3/8"   1/2"   5/8"   3/4"   7/8"   1"   1"1/8*  | 38,0  | 22,3  | 1                | 147    | 1/4" x 1/2"                  | 0,16        |
| 1210      | 1/2"   5/8"   3/4"   7/8"   1"   1"1/8   1"1/4  | 47,5  | 25,4  | 1                | 407    | 3/8" x 5/8"                  | 0,32        |
| 1215      | 1/2"   5/8"   3/4"   7/8"   1"   1"1/8   1"1/4  | 47,5  | 38,1  | 1                | 407    | 3/8" x 5/8"                  | 0,50        |
| 1610      | 1/2"   5/8"   3/4"   7/8"   1"   1"1/8   1"1/4  | 57,0  | 25,4  | 1                | 486    | 3/8" x 5/8"                  | 0,41        |
| 1615      | 1/2"   5/8"   3/4"   7/8"   1"   1"1/8   1"1/4   1"3/8   1"1/2   1"5/8*   | 57,0  | 38,1  | 1                | 486    | 3/8" x 5/8"                  | 0,60        |
| 2012      | 3/4"   7/8"   1"   1"1/8   1"1/4   1"3/8   1"1/2   1"5/8   1"3/4   1"7/8   2"   | 70,0  | 31,8  | 1                | 808    | 7/16" x 7/8"                 | 0,75        |
| 2517      | 3/4"   7/8"   1"   1"1/8   1"1/4   1"3/8   1"1/2   1"5/8   1"3/4   1"7/8   2"   2"1/8   2"1/4   2"3/8   2"1/2                   | 85,5  | 44,5  | 1                | 1310   | 1/2" x 1"                    | 1,06        |
| 3020      | 1"1/4   1"3/8   1"1/2   1"5/8   1"3/4   1"7/8   2"   2"1/8   2"1/4   2"3/8   2"1/2   2"5/8   2"3/4   2"7/8   3"                 | 108,0 | 50,8  | 1                | 2710   | 5/8" x 1"1/4                 | 2,50        |
| 3030      | 1"1/4   1"3/8   1"1/2   1"5/8   1"3/4   1"7/8   2"   2"1/8   2"1/4   2"3/8   2"1/2   2"5/8   2"3/4   2"7/8   3"                 | 108,0 | 76,2  | 1                | 2710   | 5/8" x 1"1/4                 | 3,75        |
| 3525      | 1"1/2   1"5/8   1"3/4   1"7/8   2"   2"1/8   2"1/4   2"3/8   2"1/2   2"5/8   2"3/4   2"7/8   3"   3"1/8   3"1/4   3"3/8   3"1/2 | 127,0 | 64,9  | 2                | 5060   | 1/2" x 1"1/2                 | 4,20        |
| 3535      | 1"1/2   1"5/8   1"3/4   1"7/8   2"   2"1/8   2"1/4   2"3/8   2"1/2   2"5/8   2"3/4   2"7/8   3"   3"1/8   3"1/4   3"3/8   3"1/2 | 127,0 | 88,9  | 2                | 5060   | 1/2" x 1"1/2                 | 5,13        |
| 4030      | 1"3/4   1"7/8   2"   2"1/8   2"1/4   2"3/8   2"1/2   2"5/8   2"3/4   2"7/8   3"   3"1/8   3"1/4   3"3/8   3"1/2   3"3/4   4"    | 146,0 | 76,2  | 2                | 8740   | 5/8" x 1"3/4                 | 6,75        |
| 4040      | 1"3/4   1"7/8   2"   2"1/8   2"1/4   2"3/8   2"1/2   2"5/8   2"3/4   2"7/8   3"   3"1/8   3"1/4   3"3/8   3"1/2   3"3/4   4"    | 146,0 | 101,6 | 2                | 8740   | 5/8" x 1"3/4                 | 7,68        |
| 4545      | 2"1/4   2"3/8   2"1/2   2"5/8   2"3/4   2"7/8   3"   3"1/8   3"1/4   3"3/8   3"1/2   3"3/4   4"   4"1/4   4"1/2                 | 162,0 | 115,0 | 2                | 12400  | 3/4" x 2"                    | 10,56       |
| 5040      | 2"3/4   2"7/8   3"   3"1/8   3"1/4   3"3/8   3"1/2   3"3/4   4"   4"1/4   4"1/2   4"3/4   5"                                    | 177,6 | 101,6 | 2                | 14200  | 7/8" x 2"1/4                 | 14,20       |
| 5050      | 2"3/4   2"7/8   3"   3"1/8   3"1/4   3"3/8   3"1/2   3"3/4   4"   4"1/4   4"1/2   4"3/4   5"                                    | 177,6 | 127,0 | 2                | 14200  | 7/8" x 2"1/4                 | 15,17       |

### Dimension of the keyways ( B.S. 46 - Part. 1-1958)

| D - Over/to   | b     | t         |
|---------------|-------|-----------|
| 1/4" - 1/2"   | 1/8"  | D + 1/16" |
| 1/2" - 3/4"   | 3/16" | D + 3/32" |
| 3/4" - 1"     | 1/4"  | D + 1/8"  |
| 1" - 1"1/4    | 5/16" | D + 1/8"  |
| 1"1/4 - 1"1/2 | 3/8"  | D + 1/8"  |
| 1"1/2 - 1"3/4 | 7/16" | D + 5/32" |
| 1"3/4 - 2"    | 1/2"  | D + 5/32" |
| 2" - 2"1/2    | 5/8"  | D + 7/32" |

| D - Over/to | b     | t         |
|-------------|-------|-----------|
| 2"1/2 - 3"  | 3/4"  | D + 1/4"  |
| 3" - 3"1/2  | 7/8"  | D + 5/16" |
| 3"1/2 - 4"  | 1"    | D + 3/8"  |
| 4" - 5"     | 1"1/4 | D + 7/16" |
| 5" - 6"     | 1"1/2 | D + 1/2"  |
| 6" - 7"     | 1"3/4 | D + 5/8"  |



| D*      | b     | T         |
|---------|-------|-----------|
| 1"      | 1/4"  | D + 1/16" |
| 1"1/8 * | 5/16" | D + 5/64" |
| 1"5/8 * | 7/16" | D + 1/8"  |

Shafts with a diameter tolerance of +0,05 / -0,125 mm are recommended. Best results are achieved with a ISO h6 tolerance. For shafts up to 100 mm diameter, an affordable forged h9 shaft can be used. To be used with or without key.