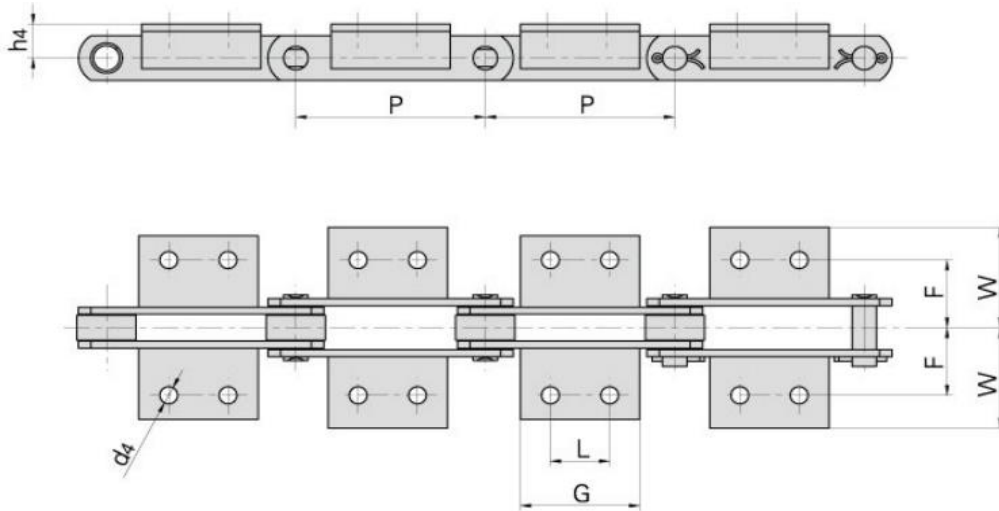


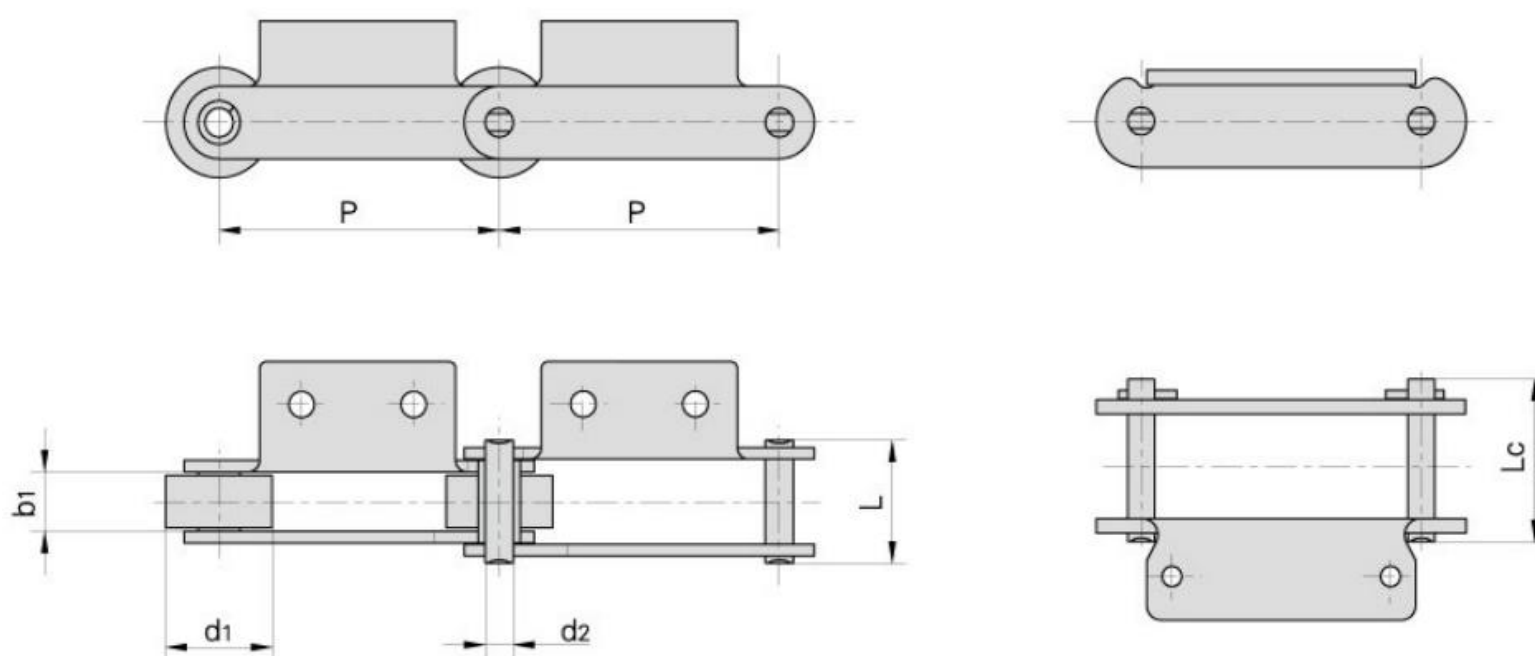
ISO Chain No.	P mm	L mm	G mm	d4 mm	F mm	W mm	h4 mm
M20	40,0	Δ	14,0	6,6	27,0	40,0	16,0
	50,0	Δ	14,0				
	63,0	20,0	35,0				
	80,0	35,0	50,0				
M28	50,0	Δ	20,0	9,0	32,0	47,0	20,0
	63,0	Δ	20,0				
	80,0	25,0	45,0				
	100,0	40,0	60,0				
M40	63,0	Δ	31,0	9,0	35,0	50,0	25,0
	80,0	20,0	45,0				
	100,0	40,0	60,0				
	125,0	65,0	85,0				
M56	63,0	Δ	22,0	11,00	44,00	61,00	30,0
	80,0	Δ	30,0				
	100,0	25,0	50,0				
	125,0	50,0	75,0				
	160,0	85,0	110,0				
M80	80,00	Δ	30,0	11,00	48,00	65,00	35,0
	100,00	25,0	50,0				
	125,00	50,0	75,0				
	160,00	85,0	110,0				
	200,00	125,0	150,0				

Δ Attachments with 1 hole

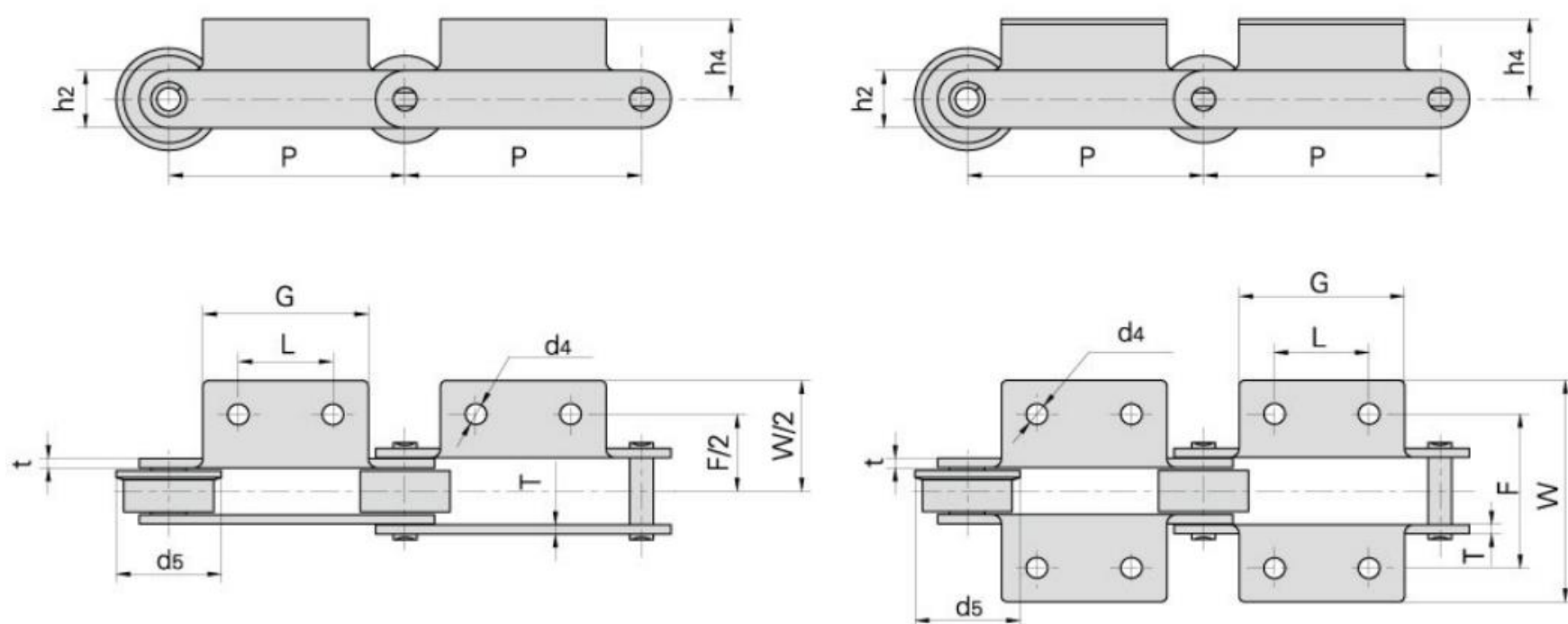


ISO Chain No.	P mm	L mm	G mm	d4 mm	F mm	W mm	h4 mm
M112	80,0	Δ	28,0	14,0	55,0	80,0	40,0
	100,0	Δ	40,0				
	125,0	35,0	65,0				
	160,0	65,0	95,0				
	200,0	100,0	130,0				
M160	100,0	Δ	30,0	14,0	62,0	85,0	45,0
	125,0	25,0	50,0				
	160,0	50,0	80,0				
	200,0	85,0	115,0				
	250,0	145,0	175,0				
M224	125,0	Δ	35,0	18,0	70,0	110,0	55,0
	160,0	Δ	60,0				
	200,0	65,0	100,0				
	250,0	125,0	160,0				
	315,0	190,0	230,0				
M315	160,0	Δ	35,0	18,0	80,0	115,0	65,0
	200,0	50,0	85,0				
	250,0	100,0	140,0				
	315,0	155,0	190,0				
	400,0	155,0	205,0				

Δ Attachments with 1 hole

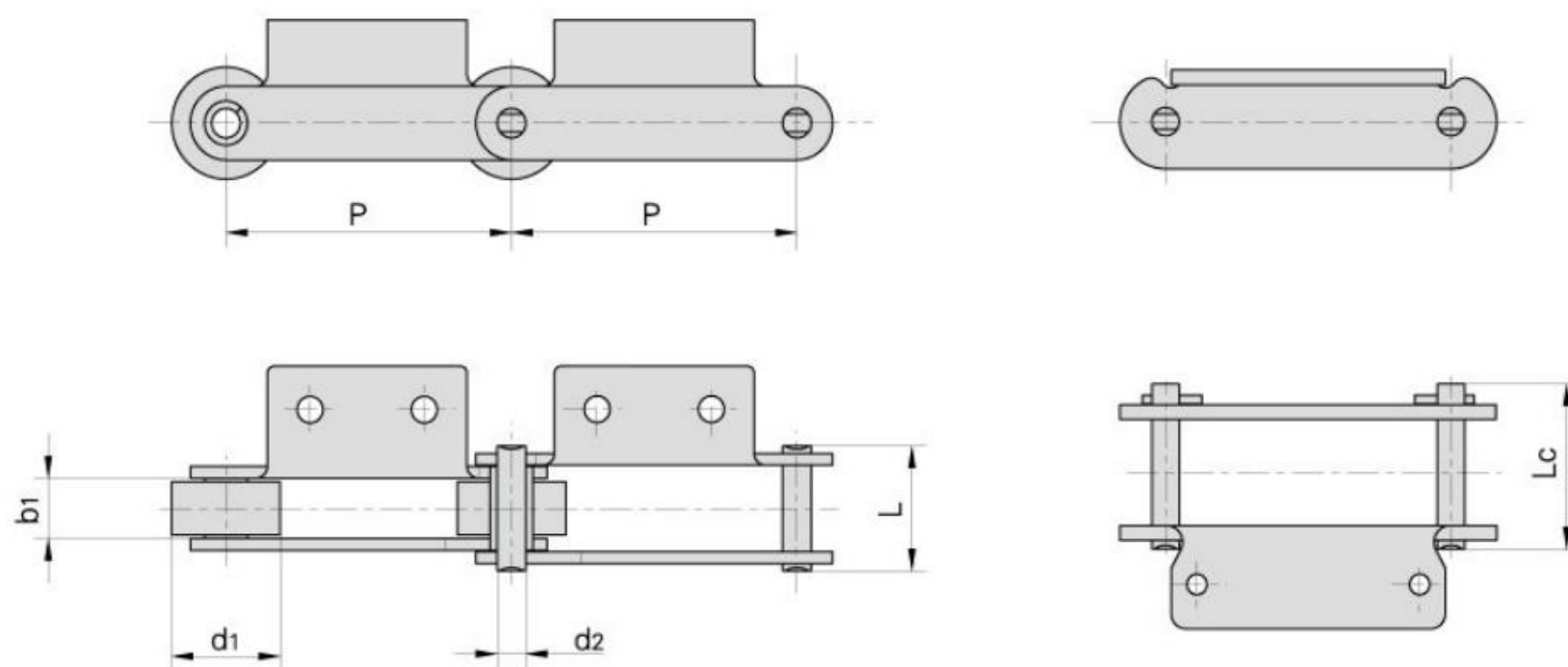


Chain No.	Pitch (mm)	Roller diameter (mm)	Width between inner plates (mm)	Pin diameter (mm)	Pin length (mm)		Ultimate tensile strength	Average tensile strength	Weight pr. meter q
					Q _{min}	Q ₀			
	P	d _{1max}	b _{1min}	d _{2max}	L _{max}	L _{cmax}	kN/LB	kN	kg/m
M18F1A1-P-50	50,0	25,0	11,5	5,72	26,0	28,2	18,0/4050	20,0	2,46
M18F2A1.02-P-50	50,0	25,0	11,5	5,72	28,0	30,2	18,0/4050	20,0	2,18
M18F4A1.02-S-50	50,0	15,0	12,0	6,00	24,0	26,5	18,0/4050	20,0	1,20
M28F3A2-P-63	63,3	30,0	17,0	7,00	37,3	40,3	35,0/7874	39,0	3,48
M28F1A2-P-80	80,0	29,4	18,0	7,00	35,4	38,7	28,0/6300	31,0	2,60
M28F3A2-F-100	100,0	30,0	17,0	7,00	37,3	40,3	35,0/7874	39,0	3,46
M32A1.02-P-50	50,0	31,0	15,0	10,00	33,0	35,5	32,0/7200	35,2	4,09
M32A1F1-P-50	50,0	31,0	15,0	10,00	33,0	35,5	32,0/7200	35,2	3,96
M35F4A1.01-C-69	69,0	25,0	12,0	7,00	27,5	30,0	35,0/7874	39,0	2,26
M40FA1.02-P-50	50,0	31,0	15,0	10,00	36,6	39,0	75,0/16872	82,5	4,52
M40FK2F1-P-50	50,0	31,0	15,0	10,00	36,6	39,0	40,0/9000	44,0	4,94
M40FA2-P-50	50,0	31,0	15,0	10,00	36,6	39,0	40,0/9000	44,0	4,54
M40FA1F1.02-P-50	50,0	31,0	15,0	10,00	36,6	39,0	40,0/9000	44,0	4,31
M40FA2F1.08-P-50	50,0	31,0	15,0	10,00	36,6	39,0	40,0/9000	44,0	4,08
M40F17A2-P-50,8	50,8	31,0	15,2	13,40	38,0	42,8	53,9/12127	59,2	4,90
M40F5A2-S-65	65,0	24,0	15,0	12,00	38,0	41,0	40,0/9000	44,0	4,74
M40F10-F-76,2	76,2	31,5	15,0	14,00	38,0	42,0	40,0/9000	44,0	4,16
M40F1-P-125	125,0	36,0	38,0	14,27	75,6	-	40,0/9091	44,0	10,18
M56F1-P-100	100,0	38,0	20,5	10,00	42,3	46,1	56,0/12727	61,0	4,63
M56F2-P-100	100,0	42,0	22,5	10,00	44,6	48,5	56,0/12727	61,0	5,67
M56F3-P-100	100,0	38,0	20,5	10,00	42,3	46,1	56,0/12727	61,0	4,72
M56F8-P-100	100,0	38,0	17,0	10,00	38,8	42,6	56,0/12727	61,0	3,79
M56F9-F1-100	100,0	38,00	20,5	10,00	46,3	50,1	88,2/19845	97,0	5,80
M56A2-P-125	125,0	42,00	24,0	10,00	46,0	49,5	56,0/12727	61,0	5,24
M75-P100	100,0	38,00	18,9	9,53	40,4	44,7	75,0/17045	83,0	4,85
M75-P100F1	100,0	38,00	18,9	9,53	38,4	42,7	75,0/17045	83,0	4,01



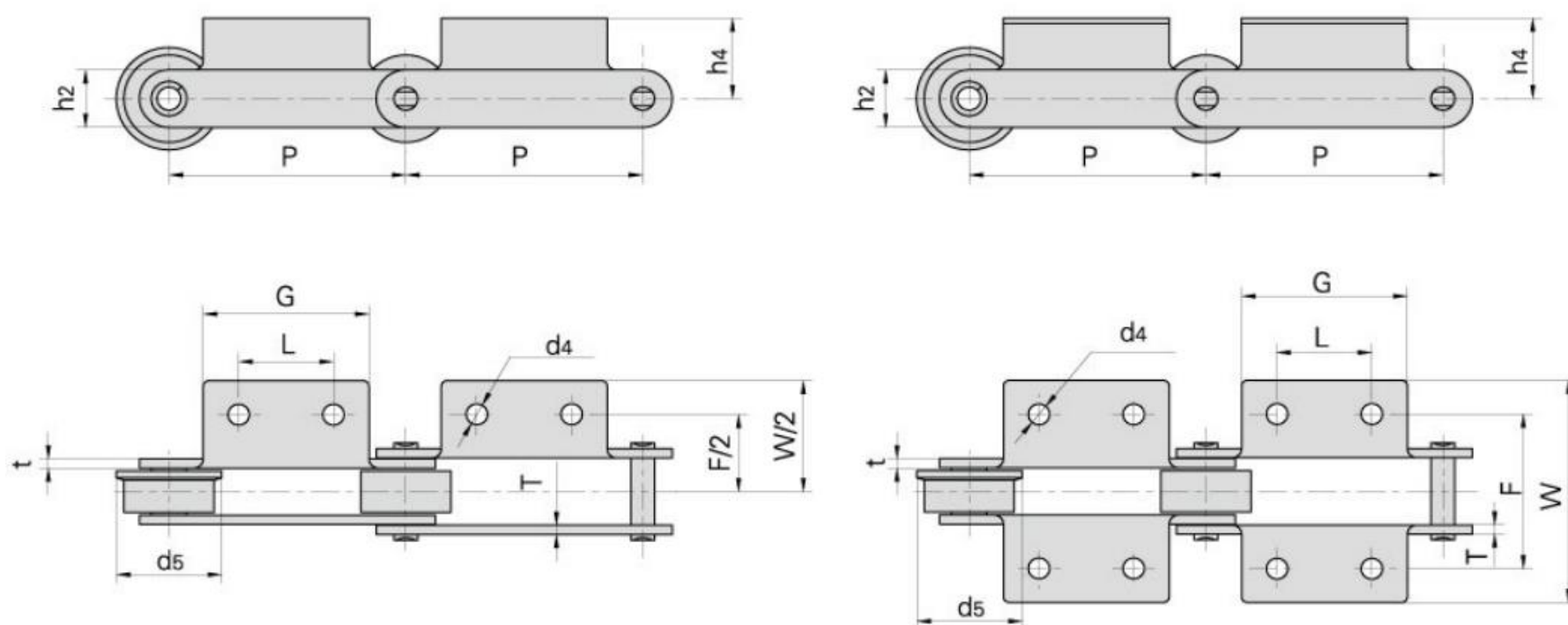
Chain No.	P (mm)	L (mm)	G (mm)	F (mm)	W (mm)	h4 (mm)	h2 (mm)	d4 (mm)	t/T (mm)	d5 (mm)
M18F1A1-P-50	50,0	Δ	46,0	44,0	72,0	24,0	18,0	6,5	2,50	-
M18F2A1.02-P-50	50,0	Δ	41,0	48,0	68,0	25,0	15,0	6,5	3,00	-
M18F4A1.02-S-50	50,0	Δ	30,0	50,0	83,0	20,0	15,0	8,0	2,03	-
M28F3A2-P-63	63,3	20,0	50,0	64,0	92,0	20,0	20,0	9,0	4,00	-
M28F1A2-P-80	80,0	25,0	45,8	66,0	91,6	11,8	20,5	8,8	3,25	-
M28F3A2-F-100	100,0	40,0	76,0	64,0	100,0	20,0	20,0	9,0	4,00	40
M32A1.02-P-50	50,0	Δ	60,0	62,0	97,0	35,0	23,0	10,0	3,00	-
M32A1F1-P-50	50,0	Δ	30,0	62,0	92,0	28,0	23,0	10,0	3,00	-
M35F4A1.01-C-69	69,0	Δ	60,0	50,0	74,0	25,5	19,0	7,0	2,50	-
M40FA1.02-P-50	50,0	Δ	60,0	70,0	98,0	17,5	25,0	10,0	4,00	-
M40FK2F1-P-50	50,0	30,0	60,0	67,5	100,0	17,0	25,0	9,0	4,00	-
M40FA2-P-50	50,0	30,0	45,0	93,0	136,0	14,5	25,0	6,5	4,00	-
M40FA1F1.02-P-50	50,0	Δ	35,0	54,0	104,0	20,5	25,0	10,5	4,00	-
M40FA2F1.08-P-50	50,0	25,0	45,0	90,0	122,0	22,0	25,0	8,5	4,00	-
M40F17A2-P-50,8	50,8	30,0	55,0	66,0	92,0	18,0	25,0	10,5	5,00/4,00	-
M40F5A2-S-65	65,0	25,0	45,0	90,0	122,0	24,5	30,0	8,5	4,00	-
M40F10-F-76,2	76,2	22,2	38,3	76,2	106,5	19,0	26,0	9,4	4,00	40
M40F1-P-125	125,0	50,0	90,0	100,0	140,0	36,0	50,0	13,0	6,00	-
M56F1-P-100	100,0	40,0	70,0	67,5	96,6	35,0	25,0	9,0	4,00	-
M56F2-P-100	100,0	29,7	50,0	124,0	148,0	21,5	32,0	7,0	4,00	-
M56F3-P-100	100,0	50,0	70,0	71,0	101,0	35,0	25,0	9,0	4,00	-
M56F8-P-100	100,0	Δ	70,0	63,8	95,0	25,0	25,0	8,2	4,00	-
M56F9-F1-100	100,0	40,00	70,0	68,0	96,6	25,0	32,0	9,0	5,00	45
M56A2-P-125	125,0	50,00	75,0	88,0	128,0	30,0	30,0	11,0	4,00	-
M75-P100	100,0	40,00	70,0	64,0	112,0	24,9	26,0	9,0	4,00	-
M75-P100F1	100,0	40,00	70,0	64,0	112,0	24,4	26,0	9,0	3,50	-

Δ Attachments with 1 hole



Chain No.	Pitch (mm)	Roller diameter (mm)	Width between inner plates (mm)	Pin diameter (mm)	Pin length (mm)		Ultimate tensile strength	Average tensile strength	Weight pr. meter q
	P	d1max	b1min	d2max	Lmax	Lcmax	Qmin	Q0	
							kN/LB	kN	kg/m
M75-P100F3	100,0	28,5	23,9	11,10	46,3	50,3	75,0/17045	83,0	4,53
M75F4-P-100	100,0	38,0	18,9	9,53	40,4	44,7	75,0/17045	83,0	4,62
M75-PF1-100	100,0	19,1	18,9	9,53	40,4	44,7	75,0/16872	75,0	3,43
M80K1F1-P-100	100,0	50,0	28,0	12,00	55,0	58,5	80,0/18000	88,0	9,10
*M80K2F1-B-100	100,0	18,0	28,0	12,00	55,0	58,5	80,0/18000	88,0	5,94
*M80F5K1-B-100	100,0	18,0	28,0	12,00	55,0	58,5	80,0/18000	88,0	5,45
M80A2F1-F-160	160,0	50,0	29,0	12,00	64,0	-	80,0/18000	88,0	7,45
M112F5K2-P-100	100,0	36,0	37,0	16,00	69,0	74,0	112,0/25200	123,2	8,28
*M112K2F2-B-100	100,0	21,0	32,0	15,00	64,5	69,0	112,0/25200	123,2	7,53
M112F16K1-P-125	125,0	60,0	32,0	15,00	68,5	73,0	112,0/25200	123,2	13,00
M112K2F1-S-125	125,0	30,0	32,0	16,00	64,5	69,0	112,0/25200	123,2	7,35
M112F9A2-F-180	180,0	50,0	32,0	15,00	64,5	69,0	160,0/35993	176,0	10,30
M112F3-F-200	200,0	60,0	37,0	16,00	69,0	74,0	112,0/25200	123,2	11,00
M160F1K2-P-100	100,0	36,0	36,0	18,00	76,0	80,0	160,0/35993	176,0	10,80
*M160F1K2.03-B-100	100,0	18,0	36,0	18,00	76,0	80,0	160,0/35993	176,0	9,73
M160F12K2-S-100	100,0	36,0	38,0	14,00	76,0	-	100,0/22496	110,0	9,33
*M160F2-B-100	100,0	25,0	37,0	18,00	73,3	83,0	222,0/49940	244,2	11,36
M160F3K1F1-P-101,6	101,6	66,7	26,0	26,90	58,0	78,5	156,0/35093	171,6	17,37
M160A2F7-F-200	200,0	70,0	37,0	18,00	85,0	-	181,8/40905	200,0	15,20
M160K2F2-S-200	200,0	36,0	36,0	18,00	76,0	80,0	160,0/36364	176,0	11,40
M160A2F8-F-200	200,0	70,0	37,0	18,00	85,0	-	181,8/40905	200,0	15,20
M224F6A2-P-160	160,0	85,0	42,0	21,00	87,5	92,5	224,0/51982	246,5	27,56
M224F1K2-P-200	200,0	85,0	42,0	21,00	95,0	-	224,0/50909	246,5	21,20

*Bushing chain: d1 in the table indicate the external diameter of the bushing



Chain No.	P (mm)	L1 (mm)	G (mm)	F (mm)	W (mm)	h4 (mm)	h2 (mm)	d4 (mm)	t/T (mm)	d5 (mm)
M75-P100F3	100,0	50,0	70,0	75,7	96,7	35,0	26,0	9,7	4,0	-
M75F4-P-100	100,0	40,0	70,0	90,0	112,4	24,9	26,0	8,5	4,0	-
M75-PF1-100	100,0	40,0	70,0	64,0	112,0	24,9	26,0	9,0	4,0	-
M80K1F1-P-100	100,0	Δ	30,0	96,0	138,0	35,0	35,0	11,0	5,0	-
*M80K2F1-B-100	100,0	70,0	100,0	96,0	130,0	35,0	35,0	11,0	5,0	-
*M80F5K1-B-100	100,0	Δ	60,0	100,0	156,0	23,2	35,0	13,0 x 17,0	5,0	-
M80A2F1-F-160	160,0	60,0	95,0	94,0	124,0	27,5	35,0	9,0	5,0	60,0
M112F5K2-P-100	100,0	35,0	65,0	98,5	140,0	40,0	40,0	14,0	6,0	-
*M112K2F2-B-100	100,0	30,0	60,0	100,0	130,0	30,0	40,0	9,0	6,0	-
M112F16K1-P-125	125,0	Δ	72,0	120,0	184,0	39,0	40,0	13,0	7,0	-
M112K2F1-S-125	125,0	80,0	110,0	85,8	115,8	35,0	40,0	13,0	6,0	-
M112F9A2-F-180	180,0	100,0	130,0	110,0	160,0	40,0	40,0	14,0	6,0	60,0
M112F3-F-200	200,0	90,0	120,0	102,0	137,5	40,0	45,0	11,0	6,0	75,0
M160F1K2-P-100	100,0	40,0	80,0	124,0	183,0	35,0	40,0	14,0	7,0	-
*M160F1K2.03-B-100	100,0	40,0	80,0	124,0	283,0	35,0	40,0	14,0	7,0	-
M160F12K2-S-100	100,0	30,0	70,0	100,0	120,0	35,0	40,0	13,0	5,6	-
*M160F2-B-100	100,0	Δ	110,0	125,0	155,0	45,0	50,0	17,0	7,0	-
M160F3K1F1-P-101,6	101,6	Δ	56,0	175,0	204,0	38,0	51,0	11,0	7,1/5,1	-
M160A2F7-F-200	200,0	85,0	115,0	124,0	170,0	45,0	51,0	14,0	7,0	85,0
M160K2F2-S-200	200,0	10,0	180,0	103,0	133,0	45,0	51,0	9,0	7,0	-
M160A2F8-F-200	200,0	80,0	115,0	124,0	170,0	45,0	51,0	12,0	7,0	85,0
M224F6A2-P-160	160,0	80,0	125,0	136,0	182,0	62,0	72,0	17,0	8,0	-
M224F1K2-P-200	200,0	80,0	120,0	128,0	168,0	40,0	50,0	14,0	9,0	-

Δ Attachments with 1 hole