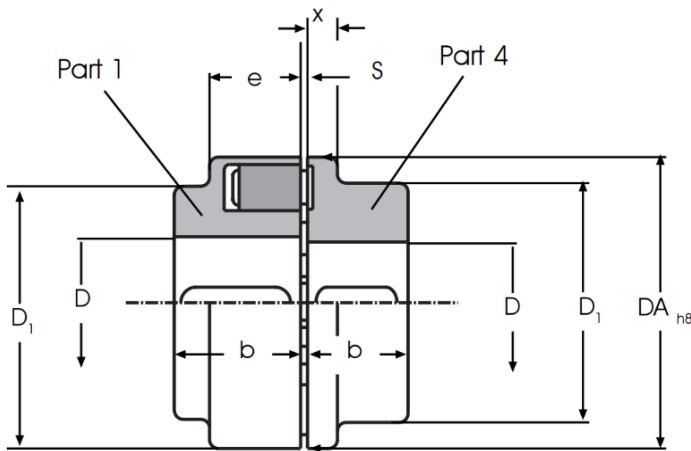




## DDK Flexible couplings

Flexible claw couplings with rubber elements for connection of shafts. Style A = 2 part.



Due to their flexibility, noise, shock and rotational variations are efficiently damped.

Radial, axial and angular movement between the two halves of the coupling are corrected.

DDK couplings are manufactured in 2 and 3 part arrangements. Replacement of the elements in the 2 part assembly is only possible after axial displacement of the drive. Replacement of the elements in the 3 part assembly is possible without axial displacement of the drive.

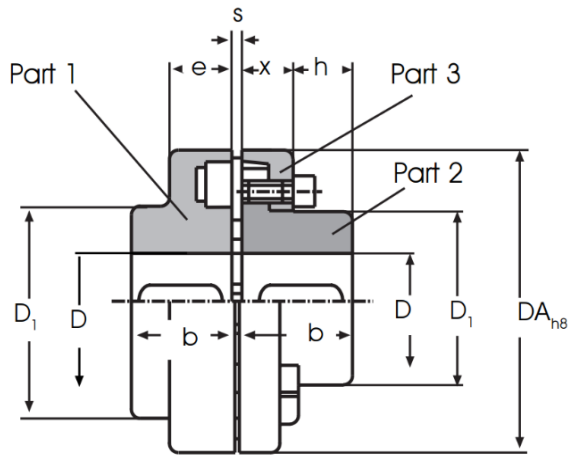
The oil resistant rubber elements are suitable for use with temperatures from -20 C to +80 C.

Part No.	Dimensions (mm)							Speed Rpm	Norminal Torque Nm	Norminal Value Pn(kw)/n	Bore D		Torque loading kgm <sup>2</sup>	Weight kg.
	DA	D1 - Part 1	D-1 - Part 4	x	c	e	s				Part 1	Part 4		
DDK 58 A	58	58	40	8	20	20	2-4	5000	19	0,0020	8-19	8-24	0,0002	0,45
DDK 68 A	68	68	46	8	20	20	2-4	5000	34	0,0036	8-24	8-28	0,0003	0,63
DDK 80 A	80	80	68	10	30	30	2-4	5000	60	0,0063	10-30	10-38	0,0012	1,50
DDK 95 A	95	76	76	12	35	30	2-4	5000	100	0,0110	11-42	11-42	0,0027	2,60
DDK 110 A	110	86	86	14	40	34	2-4	5000	160	0,0170	14-48	14-48	0,0055	4,00
DDK 125 A	125	100	100	18	50	36	2-4	5000	240	0,0250	16-55	16-55	0,0107	6,10
DDK 140 A	140	100	100	20	55	34	2-4	4900	360	0,0380	18-60	18-60	0,0140	7,00
DDK 160 A	160	108	108	20	60	39	2-6	4250	560	0,0590	22-65	22-65	0,0250	9,40
DDK 180 A	180	125	125	20	70	42	2-6	3800	880	0,0920	24-75	24-75	0,0450	14,00
DDK 200 A	200	140	140	24	80	47	2-6	3400	1340	0,1400	28-85	28-75	0,0800	20,00
DDK 225 A	225	150	150	18	90	52	2-6	3000	2000	0,2100	38-90	38-90	0,1350	24,00
DDK 250 A	250	165	165	18	100	60	3-8	2750	2800	0,2900	48-100	48-100	0,2300	34,00
DDK 280 A	280	180	180	20	110	65	3-8	2450	3900	0,4100	55-110	55-110	0,3700	45,00



## DDK Flexible couplings

Flexible claw couplings with rubber elements for connection of shafts. Style B = 3 part.



Due to their flexibility, noise, shock and rotational variations are efficiently damped.

Radial, axial and angular movement between the two halves of the coupling are corrected.

DDK couplings are manufactured in 2 and 3 part arrangements. Replacement of the elements in the 2 part assembly is only possible after axial displacement of the drive. Replacement of the elements in the 3 part assembly is possible without axial displacement of the drive.

The oil resistant rubber elements are suitable for use with temperatures from -20 C to +80 C.

Part No.	Dimensions (mm)								Speed Rpm	Norminal Torque Nm	Norminal Value Pn(kw)/n	Bore D		Torque loading kgm <sup>2</sup>	Weight kg.
	DA	D1 - Part 1	D1 - Part 2	x	b	e	h	s				Part 1	Part 2		
<b>DDK 110 B</b>	110	86	62	20	40	34	33	2-4	5000	160	0,0170	14-48	14-38	0,0047	3,5
<b>DDK 125 B</b>	125	100	75	23	50	36	38	2-4	5000	240	0,0250	16-55	16-45	0,0095	5,6
<b>DDK 140 B</b>	140	100	82	28	55	34	43	2-4	4900	360	0,0380	18-60	18-50	0,0150	7,0
<b>DDK 160 B</b>	160	108	95	28	60	39	47	2-6	4250	560	0,0590	22-65	22-58	0,0280	9,8
<b>DDK 180 B</b>	180	125	108	30	70	42	50	2-6	3800	880	0,0920	24-75	24-65	0,0490	14,2
<b>DDK 200 B</b>	200	140	122	32	80	47	53	2-6	3400	1340	0,1400	28-85	28-75	0,0850	19,8
<b>DDK 225 B</b>	225	150	138	38	90	52	61	2-6	3000	2000	0,2100	38-90	24-85	0,1500	27,0
<b>DDK 250 B</b>	250	165	155	42	100	60	69	3-8	2750	2800	0,2900	48-100	32-95	0,2500	37,0
<b>DDK 280 B</b>	280	180	172	42	110	65	73	3-8	2450	3900	0,4100	55-110	55-105	0,4000	48,0
<b>DDK 315 B</b>	315	200	195	47	125	70	78	3-8	2150	5500	0,5800	100-120	100-120	0,7100	66,0
<b>DDK 350 B</b>	350	180	180	51	140	74	83	3-8	1950	7700	0,8100	65-110	65-110	1,1000	86,0
<b>DDK 400 B</b>	400	200	200	56	160	78	88	3,8	1700	10300	1,1000	70-120	70-120	1,9000	122,0
<b>DDK 440 B</b>	440	215	215	64	180	86	99	5-10	1550	13500	1,4000	80-130	80-130	3,0000	159,0
<b>DDK 480 B</b>	480	240	240	65	190	90	104	5-10	1400	16600	1,7000	90-145	90-145	4,6000	200,0