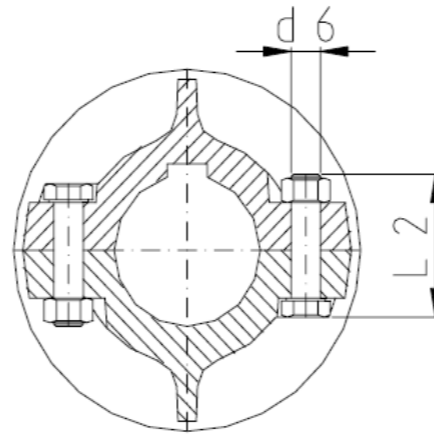
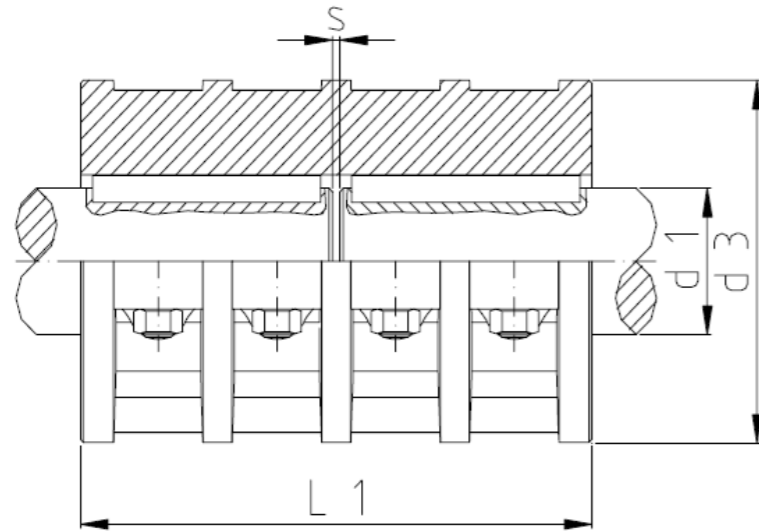
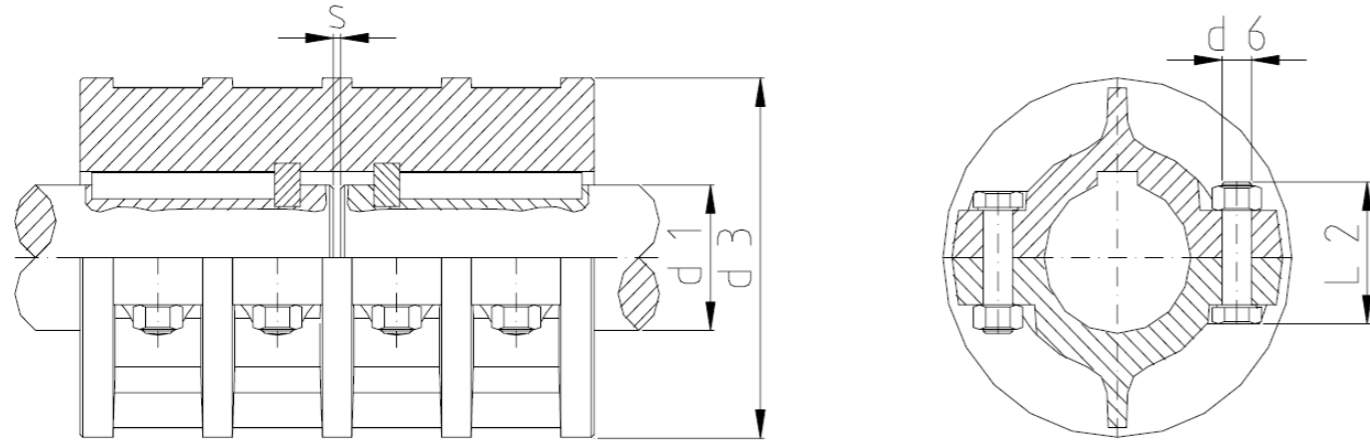


Style A for shaft-ends with the same diameter

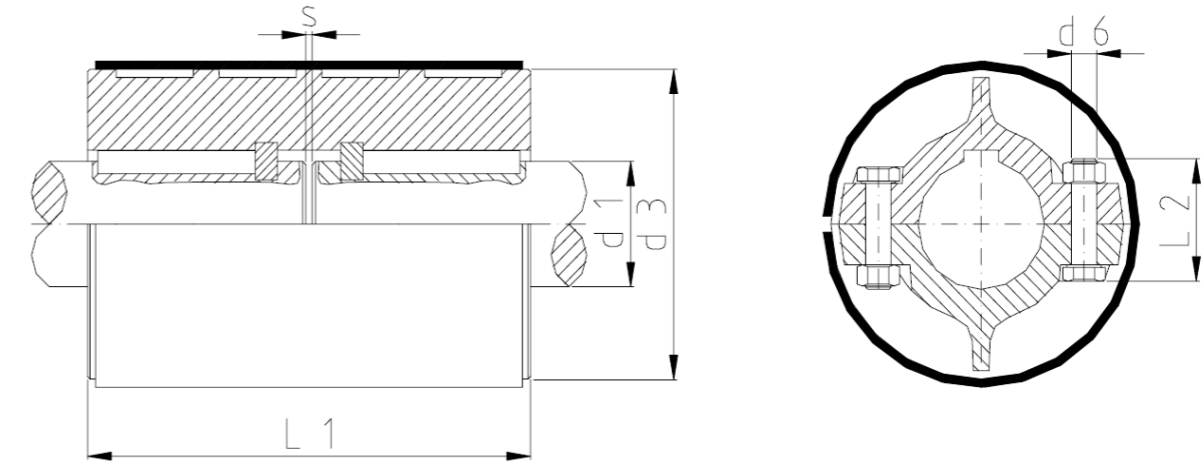


Part No.	Dimensions (mm)			Screws DIN 931 d6 x L2	Bolt tightening torque (Nm) min - max	Bore Tolerance	Keyway Key length mm	Hanger Spring Axial Loading kN max.	Rotation Speed RPM max.	Material GG		
	d1 Bore size	d3	L1							Torque load Nm max.	Weight kg	Inertia kgm <sup>2</sup>
DIN 115 A D=20	20	85	100	4 X M10x30	12 - 21	V7	-	-	1.700	25	1,9	0,0009
DIN 115 A D=25	25	100	130	4 X M12x40	21 - 37	V7	-	5	1.500	40	4,5	0,0034
DIN 115 A D=30	30	100	130	4 X M12x40	21 - 37	V7	-	5	1.500	60	4,2	0,0034
DIN 115 A D=35	35	110	160	6 X M12x50	21 - 37	V7	-	8	1.420	80	6,5	0,0066
DIN 115 A D=40	40	110	160	6 X M12x50	21 - 37	V7	-	12	1.420	100	6,2	0,0065
DIN 115 A D=45	45	120	190	6 X M12x50	21 - 37	V7	-	16	1.350	125	8,5	0,0110
DIN 115 A D=50	50	130	190	6 X M12x50	21 - 37	V7	-	16	1.300	150	9,0	0,0140
DIN 115 A D=55	55	150	220	6 X M16x55	53 - 93	U7	100	20	1.200	500	13,0	0,0260
DIN 115 A D=60	60	150	220	6 X M16x55	53 - 93	U7	100	24	1.200	850	12,5	0,0250
DIN 115 A D=65	65	170	250	6 X M16x55	53 - 93	U7	100	24	1.120	1.250	18,5	0,0510
DIN 115 A D=70	70	170	250	6 X M16x55	53 - 93	U7	110	30	1.120	1.700	17,0	0,0500
DIN 115 A D=75	75	190	280	8 X M16x60	53 - 93	U7	125	37	1.060	2.000	28,0	0,1070
DIN 115 A D=80	80	190	280	8 X M16x60	53 - 93	U7	125	37	1.060	2.500	27,0	0,1060
DIN 115 A D=90	90	215	310	8 X M20x75	104 - 186	U7	140	42	1.000	3.800	41,0	0,2030
DIN 115 A D=100	100	250	350	8 X M20x90	104 - 186	U7	160	55	920	5.400	63,0	0,3990
DIN 115 A D=110	110	250	390	8 X M24x90	204 - 340	U7	160	55	920	7.500	70,0	0,4670
DIN 115 A D=120	120	275	430	10 X M24x90	204 - 340	U7	200	70	870	11.000	96,0	0,7710
DIN 115 A D=125	125	275	430	10 X M24x90	204 - 340	U7	200	70	870	11.000	93,0	0,7590
DIN 115 A D=140	140	325	490	10 X M27x110	266 - 478	U7	200	90	800	15.000	160,0	1,6300
DIN 115 A D=160	160	365	560	12 X M27x110	266 - 478	U7	250	110	750	23.000	255,0	2,8400
DIN 115 A D=180	180	420	630	12 X M27x130	266 - 478	U7	280	-	690	32.000	320,0	5,4200
DIN 115 A D=200	200	500	700	12 X M30x140	360 - 645	U7	320	-	630	40.000	550,0	12,0200
DIN 115 A D=220	220	540	770	12 X M36x150	631 - 1130	U7	360	-	580	50.000	840,0	30,7800

Style C for vertical design with insert rings



Style CS, the same as C but with a sheet-steel casing



Dimensions (mm)			Screws - DIN 931 d6 x L2	Bolt tightening torque (Nm) min - max	Tolerance	Feather key	Hanger spring Axial loading kN max.	Rotation speed Min.-1 max.	Toque load Nm max.	Material GG	
d1	d3	L1								Weight style A kg.	Inertia kgm <sup>2</sup>
Bore size											
25	110	160	6x M12x50	2,6 - 4,7	V7	56	12	1.420	40	7	0,0066
30	110	160	6x M12x50	21 - 37	V7	56	17	1.420	60	6,8	0,0065
35	120	190	6x M12x50	21 - 37	V7	70	23	1.350	80	9,3	0,011
40	130	190	6x M12x50	21 - 37	V7	70	30	1.300	100	9,9	0,014
45	150	220	6x M16x55	53 - 93	V7	80	36	1.200	125	41,2	0,026
50	50	150	6x M16x55	53 - 93	V7	80	45	1.200	150	13,8	0,025
55	170	250	6x M16x55	53 - 93	U7	90	53	1.120	500	20,1	0,51
60	170	250	6x M16x55	53 - 93	U7	90	62	1.120	850	18,7	0,05
65	190	280	8x M16x60	53 - 93	U7	100	72	1.060	1.250	30	0,107
70	190	280	8x M16x60	53 - 93	U7	100	82	1.060	1.700	29,2	0,106
75	215	310	8x M20x75	104 - 186	U7	110	92	1.000	2.000	45,1	0,203
80	215	310	8x M20x75	104 - 186	U7	110	105	1.000	2.500	43,7	0,203
90	250	350	8x M20x90	104 - 186	U7	125	135	920	3.800	66,4	0,399
100	250	390	8x M24x90	204 - 340	U7	140	165	920	5.400	74,3	0,467
110	275	430	10x M24x90	204 - 340	U7	160	200	870	7.500	101	0,771
120	325	490	10x M27x110	266 - 478	U7	180	250	800	11.000	173,5	1,63
125	325	490	10x M27x110	266 - 478	U7	180	250	800	11.000	170,1	1,63
140	365	560	12x M27x110	266 - 478	U7	200	310	750	15.000	272,5	2,84
160	420	630	12x M27x130	266 - 478	U7	220	400	690	23.000	342,4	5,42
180	500	700	12x M27x140	266 - 478	U7	250	500	630	32.000	577	12,02
200	540		12x M27x150	266 - 478	U7	280	600	580	40.000	871,8	30,78