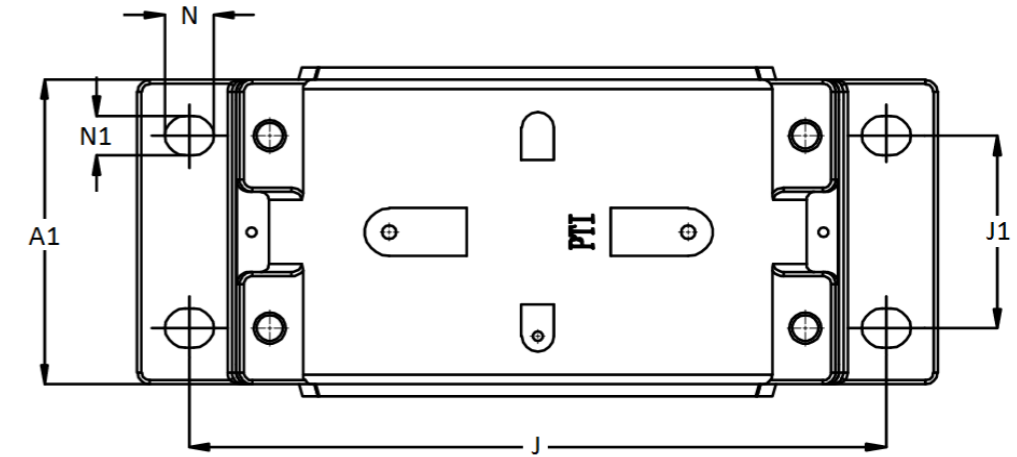
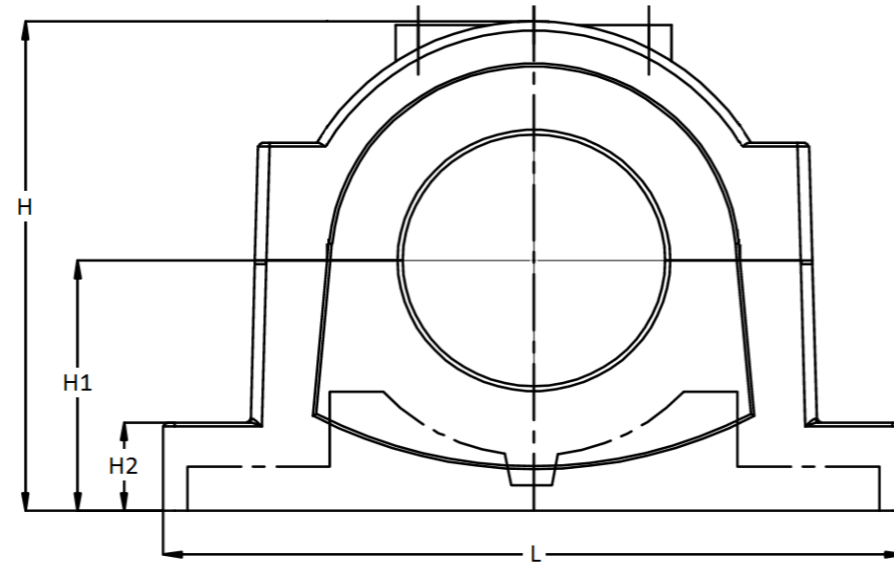
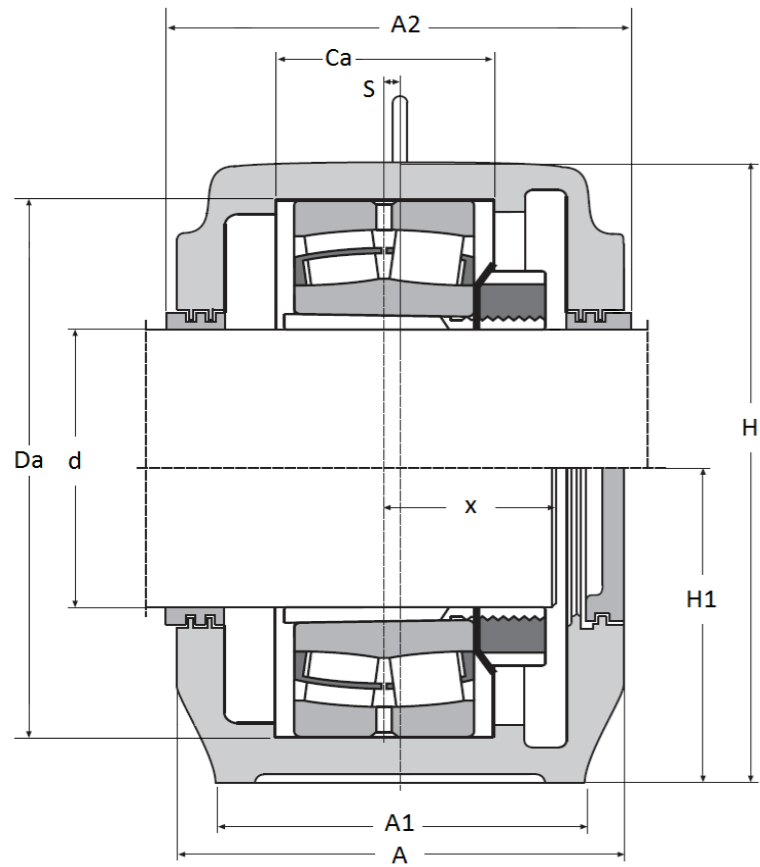




SD 2200 TS Series - Split Plummer Block Housings (SNL 2200 TS)

For spherical roller bearings on adapter sleeves, labyrinth seal, cast iron GG 20, incl. eye bolt.



Housing No.	Shaft		Dimensions (mm)													Mounting Bolt	Labyrinth Seals	Bearing	Adapter Sleeve	Fixing Rings	End cover	Grease Qty First filling	Weight (kg)	
	d	Da	Ca	A	A1	A2	H	H1	H2	L	J	J1	x _{max}	N	N1									S
SD 2232 TS	140	290	115	240	190	250	353	180	75	530	450	110	108	34	28	S	M24	TS 38-140	22232 K	H 3132	2 x FR 290-17,5	ETS 38	1,5 kg	77,5
SD 2234 TS	150	310	122	260	210	270	375	190	80	560	480	120	112	34	28	10	M24	TS 40-150	22234 K	H 3134	2 x FR 310-18	ETS 44	2,0 kg	97,5
SD 2236 TS	160	320	124	260	210	270	375	190	80	560	480	120	112	34	28	10	M24	TS 38-160	22236 K	H 3136	2 x FR 320-19	ETS 38	1,8 kg	97,5
SD 2238 TS	170	340	132	280	230	290	411	210	85	610	510	130	122	42	35	10	M30	TS 40-170	22238 K	H 3138	2 x FR 340-10	ETS 44	2,3 kg	123
SD 2240 TS	180	360	140	290	240	300	434	220	90	640	540	140	128	42	35	12	M30	TS 48-180	22240 K	H 3140	2 x FR 360-21	ETS 48	3,0 kg	139
SD 2244 TS	200	400	148	310	260	315	474	240	95	700	600	150	136	42	35	12	M30	TS 48-200	22244 K	H 3144	4 x FR 400-10	ETS 52	3,4 kg	187
SD 2248 TS	220	440	164	320	280	330	516	260	100	770	650	160	146	50	42	13	M36	TS 52-220	22248 K	H 3148	2 x FR 440-22	ETS 52	4,3 kg	221
SD 2252 TS	240	480	181	350	310	360	591	300	110	830	710	190	170	50	42	22	M36	TS 64-240	22252 K	H 3152	2 x FR 480-25,5	ETS 64	7,0 kg	301
SD 2256 TS	260	500	180	350	310	360	591	300	110	830	710	190	170	50	42	22	M36	TS 60-260	22256 K	H 3156	2 x FR 500-25	ETS 60	6,2 kg	301
SD 2260 TS	280	540	196	370	330	380	631	320	115	880	750	200	181	50	42	23	M36	TS 64-280	22260 K	H 3160	2 x FR 540-28	ETS 64	7,7 kg	339
SD 2264 TS	300	580	210	400	360	410	675	340	120	950	810	220	197	50	42	24	M36	TS 68-300	22264 K	H 3164	2 x FR 580-20	ETS 68	9,4 kg	427

These Housings can also be manufactured of ductile iron or cast steel. Special kevlar or felt seals on request.