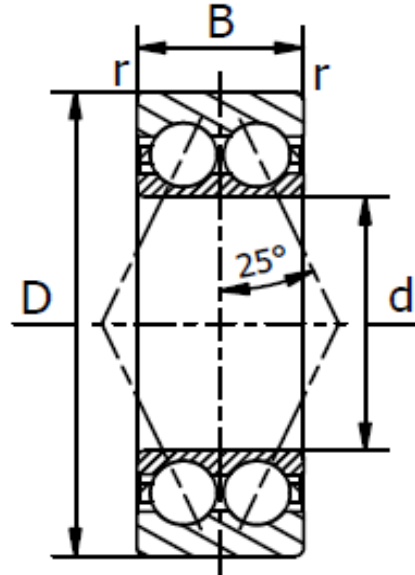
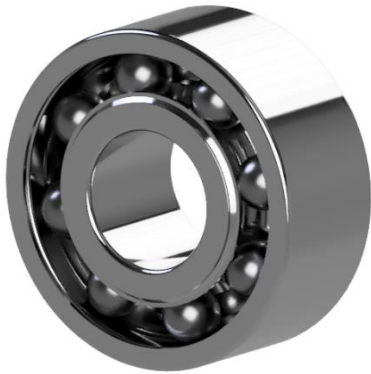


3000 Series - Double Row Angular Contact Ball Bearing

Available in open and contact shielded (2RS) versions, contact angle $\alpha = 25^\circ$.



Item No.	Dimensions (mm)				Basic Load Ratings (N)		Limiting Speeds (RPM)		Mass (kg)
	d	D	B	r_{min}	Dynamic C_r	Static C_{Or}	Grease 2RS	Oil Open	
3000	10	26	12	0,3	5.700	3.200	19.700	31.000	0,022
3001	12	28	12	0,3	6.100	3.700	17.600	29.500	0,025
3002	15	32	13	0,3	8.500	5.400	16.700	23.900	0,042
3003	17	35	14	0,3	9.100	6.100	14.600	22.500	0,042
3004	20	42	16	0,6	14.300	9.400	12.100	18.100	0,080
3005	25	47	16	0,6	15.200	10.900	10.700	15.900	0,100
3006	30	55	19	1,0	19.900	15.400	9.000	13.500	0,160
3007	35	62	20	1,0	24.000	19.100	7.600	11.700	0,200
3008	40	68	21	1,0	25.000	21.300	6.700	10.600	0,250

For sealed bearings, add the suffix 2RS after the item number.