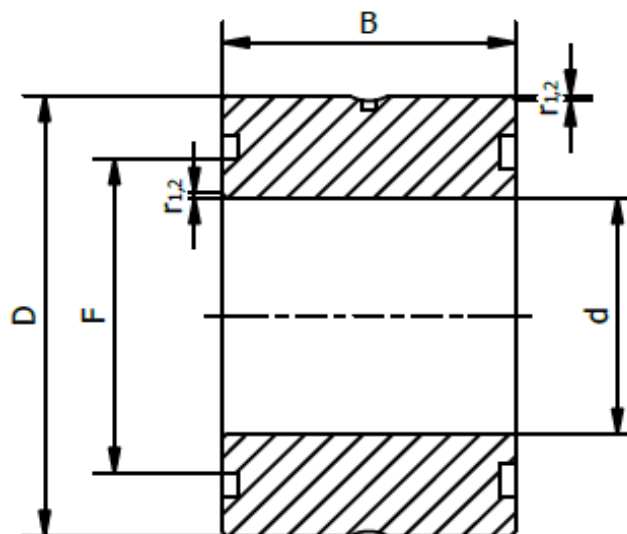




NKIA Series - Combined Needle Bearings

Needle roller/angular contact ball bearing.

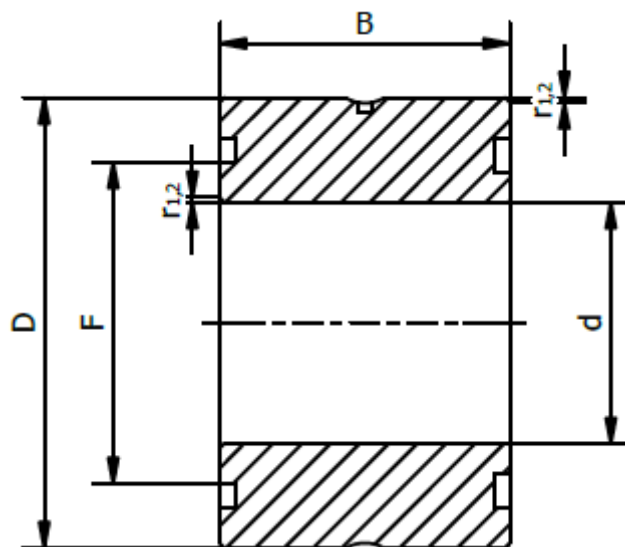


Item No.	Dimensions (mm)					Weight (g)	Basic Load Ratings (kN)				Max. Speed (RPM)	
	d	D	B	F	r _{1,2}		radial dynamic	radial static	axial dynamic	axial static	Reference	Limiting
NKIA5901	12	24	16	16	min. 0,3	40	8,09	9,65	2,07	1,92	22000	26000
NKIA5902	15	28	18	20	min. 0,3	50	11,2	15,3	2,27	2,37	19000	22000
NKIA5903	17	30	18	22	min. 0,3	56	11,4	16,3	2,24	2,74	18000	20000
NKAI5904	20	37	23	25	min. 0,3	100	21,6	28	3,79	4,21	15000	17000
NKIA59-22	22	39	23	28	min. 0,3	120	23,3	32	4,14	4,93	14000	15000
NKIA5905	25	42	23	30	min. 0,3	130	24,2	34,5	4,24	5,26	13000	15000
NKIA5906	30	47	23	35	min. 0,3	150	25,5	39	4,54	6,32	11000	13000
NKIA5907	35	55	27	42	min. 0,6	240	31,9	54	5,83	8,42	9500	11000
NKIA5908	40	62	30	48	min. 0,6	320	42,9	71	7,17	10,9	8000	9500
NKIA5909	45	68	30	52	min. 0,6	380	45,7	78	7,47	12	7500	8500



NKIA Series - Combined Needle Bearings

Needle roller/angular contact ball bearing.



Item No.	Dimensions (mm)					Weight (g)	Basic Load Ratings (kN)				Max. Speed (RPM)	
	d	D	B	F	r _{1,2}		radial dynamic	radial static	axial dynamic	axial static	Reference	Limiting
NKIA5910	50	72	30	58	min. 0,6	380	47,3	85	7,74	13,7	7000	8000
NKIA5911	55	80	34	63	min. 1	550	57,2	106	9,27	16,7	6300	7000
NKIA5912	60	85	34	68	min. 1	590	60,5	114	9,58	18	6000	6700
NKIA5913	65	90	34	72	min. 1	640	61,6	120	9,96	19,2	5600	6300
NKIA5914	70	100	40	80	min. 1	980	84,2	163	13,2	25	5000	5600