



KM series



GUK series



Part No.	KM series	GUK series	Outer diameter NUT (mm)	
			KM	GUK
AMF-51516 20-42mm	KM 1, KM 2, KM 3, KM 4, KM 5	GUK 01, GUK 02, GUK 03, GUK 04, GUK 05	22, 25, 28, 32, 38	20, 24, 28, 32, 38
AMF-51532 45-90mm	KM 6, KM 7, KM 8, KM 9, KM 10, KM 11, KM 12, KM 13	GUK 07, GUK 08, GUK 09, GUK 10, GUK 11, GUK 12, GUK 13	45, 52, 58, 65, 70, 75, 80, 85	50, 56, 62, 68, 75, 80, 85
AMF-557065 95-165mm	KM 14, KM 15, KM 16, KM 17, KM 18, KM 19, KM 20, KM 21, KM 22, KM 23, KM 24, KM 25, KM 26	GUK 15, GUK 16, GUK 17, GUK 18, GUK 19, GUK 20	95, 98, 105, 110, 120, 125, 130, 140, 145, 150, 155, 160, 165	98, 105, 110, 120, 125, 130

No. 771

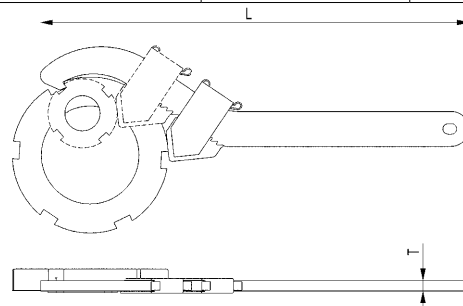
Adjustable hook wrench with nose

for grooved nuts to DIN 1804 and bearing nuts to DIN 981.

Special steel, hardened and **blued**.

Rounded edges for better handling.

Order no.	Size	L	T	Weight [g]
51201	20- 42	180	4	100
51219	45- 90	250	6	250
51227	95-165	335	10	710



No. 771Md

Adjustable hook wrench with nose and torque wrench socket

for grooved nuts to DIN 1804 and bearing nuts to DIN 981.

Special steel, hardened and **blued**.

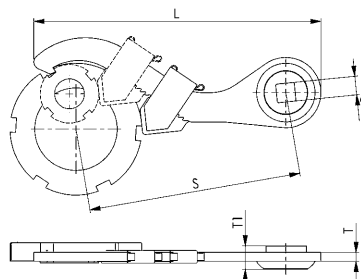
Drive: square socket

Order no.	Size	Drive SW [inch]	L	S	T	T1	Weight [g]
51516	20 - 42	1/2	135	100	4	16,0	165
51532	45 - 90	1/2	192	150	6	16,0	310
557065	95 - 165	1/2	272	200	10	16,0	680
51557	95 - 165	3/4	298	220	10	20,5	910

Note:

The set value for the torque wrench is dependant on insertion dimension „S“.

The operating manual provided with your torque wrench contains the requisite information and calculation formulae.



No. 776Md

Hinged hook wrench with pin and torque wrench socket

For nuts with radial holes to DIN 1816.

Special steel, hardened and **blued**.

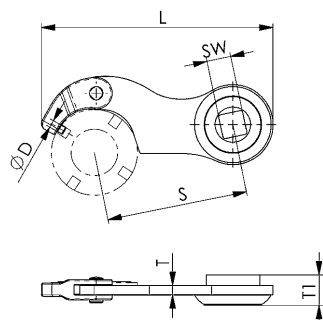
Drive: square socket

Order no.	Size	Drive SW [inch]	dia. D	L	S	T	T1	Weight [g]
52753	35-60	1/2	4	120	75	5	16,0	185
52761	60-90	1/2	6	168	100	6	16,0	320
565653	95-155	3/4	6	205	125	7	20,4	605

Note:

The set value for the torque wrench is dependant on insertion dimension „S“.

The operating manual provided with your torque wrench contains the requisite information and calculation formulae.



Recommendations



No. 771Md,
page 50



No. 250Md,
page 58



Subject to technical alterations.