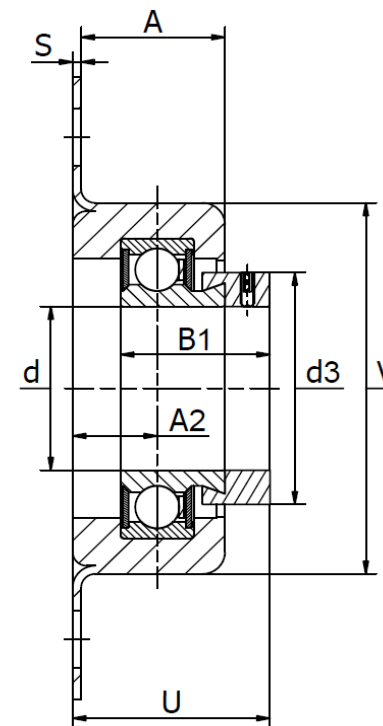
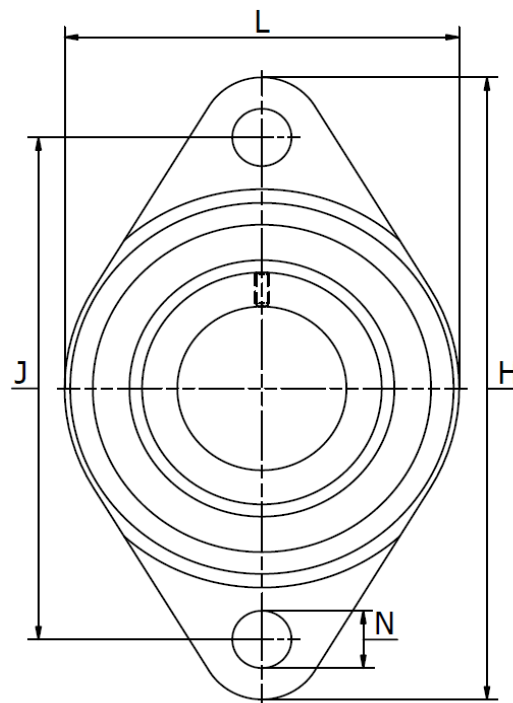




Housing units RSCMF

Two-bolt flanged housing units, zinc plated sheet steel, rubber interliner, eccentric locking collar. Temperature range -30°C to +110°C.



Part No.	Dimensions												Basic load rating, radial			Weight (kg)	
	d	H	U	A	A ₂	B ₁	d _{3 max}	J	L	N	S	V	Housing C _g	Dynamic C _r	Static C _{0r}		Bearing
RSCMF12	12	114	34,8	28,5	12,7	28,6	28,0	92	70,2	10,5	1,5	68	900	9800	4750	RAE12NPP.FA106	0,27
RSCMF15	15	114	34,8	28,5	12,7	28,6	28,0	92	70,2	10,5	1,5	68	900	9800	4750	RAE15NPP.FA106	0,27
RSCMF17	17	114	34,8	28,5	12,7	28,6	28,0	92	70,2	10,5	1,5	68	900	9800	4750	RAE17NPP.FA106	0,27
RSCMF20	20	114	36,2	28,5	12,7	31,0	33,0	92	70,2	10,5	1,5	68	1100	12800	6600	RAE20NPP.FA106	0,32
RSCMF25	25	114	36,2	28,5	12,7	31,0	37,5	92	70,2	10,5	1,5	68	1400	14000	7800	RAE25NPP.FA106	0,33
RSCMF30	30	114	36,6	28,5	15,0	26,5	42,5	92	70,2	10,5	1,5	68	1400	13200	8300	RALE30NPP.FA106	0,32