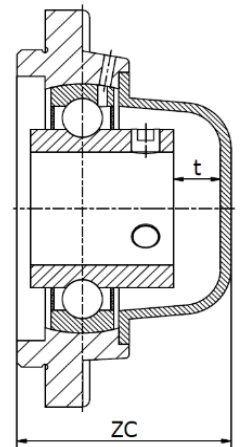
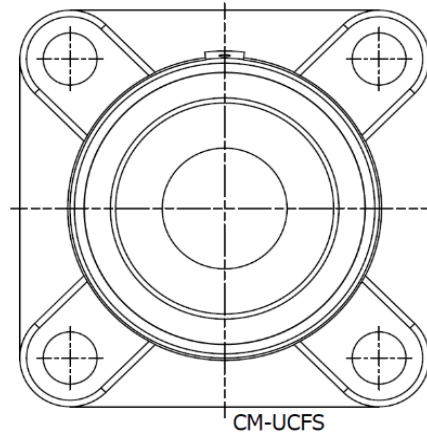
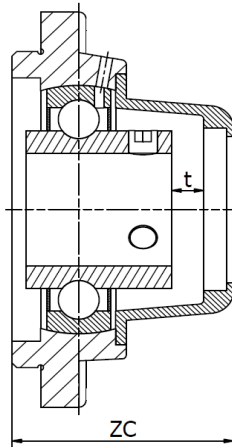
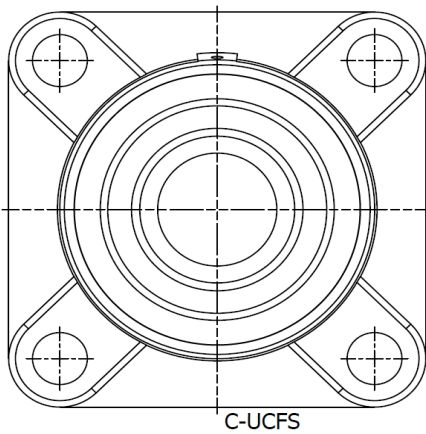




## C-UCFS / CM-UCFS 300 Series

Four-bolt flanged housing units with cast iron cover. Temperature range -30°C to +110°C



d mm	Open Cover	Closed Cover	Dimensions (mm)		Weight (kg)
			t (max)	ZC (max)	
25	C-UCFS 305	CM-UCFS 305	2	47	1,7
30	C-UCFS 306	CM-UCFS 306	2	51	2,2
35	C-UCFS 307	CM-UCFS 307	2	55	2,7
40	C-UCFS 308	CM-UCFS 308	2	61	3,9
45	C-UCFS 309	CM-UCFS 309	2	65	5,0
50	C-UCFS 310	CM-UCFS 310	2	71	6,1
55	C-UCFS 311	CM-UCFS 311	2	74	7,0
60	C-UCFS 312	CM-UCFS 312	2	81	8,6
65	C-UCFS 313	CM-UCFS 313	2	76	9,9
70	C-UCFS 314	CM-UCFS 314	2	80	12,3
75	C-UCFS 315	CM-UCFS 315	2	88	15,0
80	C-UCFS 316	CM-UCFS 316	2	87	16,5
85	C-UCFS 317	CM-UCFS 317	2	97	18,9
90	C-UCFS 318	CM-UCFS 318	2	99	23,2
95	C-UCFS 319	CM-UCFS 319	2	120	26,7
100	C-UCFS 320	CM-UCFS 320	2	126	32,3
105	C-UCFS 321	CM-UCFS 321	2	128	35,7
110	C-UCFS 322	CM-UCFS 322	2	129	42,4
120	C-UCFS 324	CM-UCFS 324	2	133	55,4
130	C-UCFS 326	CM-UCFS 326	2	142	73,8
140	C-UCFS 328	CM-UCFS 328	2	156	102,0

See our catalogue UCFS for detailed dimensions.

[UCFS datasheet](#)