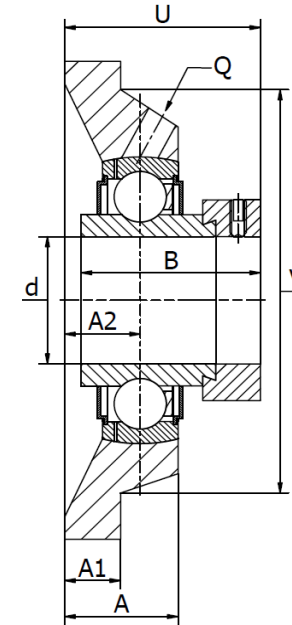
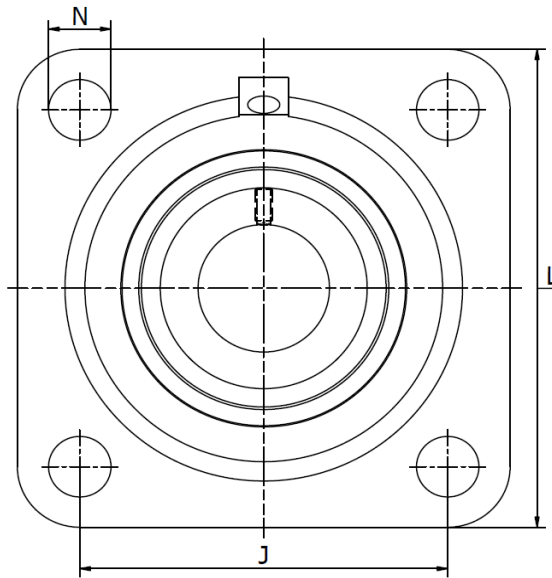




HCF 300 series (RCJO)

Cast iron housing, radial insert ball bearing with eccentric locking collar. Temperature range -30°C to +110°C



Type	Dimensions (mm)											Locking Collar Ø (mm)	Bearing no.	Housing no.	Mass kg
	d	L	U	A	A ₁	A ₂	B	J	N	Q	V				
HCF 307 R3	35	135	53,3	36	16	20	51,6	100	19	M6	100	55,0	HC 307 R3	F 307	2,5
HCF 308	40	150	59,6	40	17	23	54,6	112	19	M6	121	63,0	HC 308	F 308	2,9
HCF 310	50	175	70,0	48	19	28	66,8	132	23	1/8"	144	75,5	HC 310	F 310	4,9
HCF 312	60	195	78,0	56	22	33	68,0	150	23	M6	162	88,0	HC 312	F 312	6,8
HCF 314	70	226	85,3	61	25	36	75,4	178	25	M6	184	102,0	HC 314	F 314	10,0
HCF 316	80	250	97,8	68	27	38	93,7	196	31	M6	200	119,0	HC 316	F 316	17,2
HCF 318	90	280	109,5	76	30	44	101,0	216	35	M6	236	133,0	HC 318	F 318	21,6
HCF 320	100	310	129,0	94	32	59	109,4	242	38	M6	255	146,0	HC 320	F 320	33,6