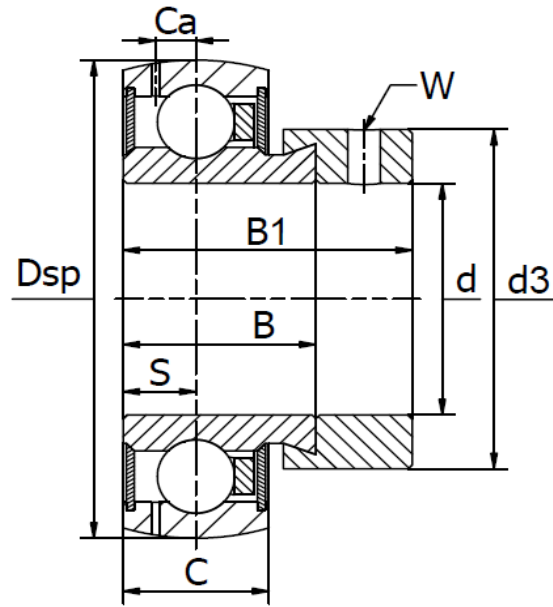




SA 200 ZP Series (GRAE..-NPP-B-FA125)

Normal duty with zinc plating (corro.), eccentric collar lock, universal regreaseable acc. to common european and japanese standards, lithium based NLGI 2/3 grease.
Temperature range -30°C to +110°C.



Bearing No.	Dimensions (mm)									Basic load rating (N)		Weight (kg)
	d	D _{sp}	B ₁	B	C	C _a	d ₃	S	W	C _r	C _{or}	
SA 201 ZP	12	40	28,6	19,0	12	3,4	28,0	6,5	M6	9800	4750	0,13
SA 202 ZP	15	40	28,6	19,0	12	3,4	28,0	6,5	M6	9800	4750	0,11
SA 203 ZP	17	40	28,6	19,0	12	3,4	28,0	6,5	M6	9800	4750	0,10
SA 204 ZP	20	47	31,0	21,4	14	4,0	33,0	7,5	M6	12800	6600	0,16
SA 205 ZP	25	52	31,0	21,4	15	3,9	37,5	7,5	M6	14000	7800	0,19
SA 206 ZP	30	62	35,8	23,8	18	4,7	44,0	9,0	M8	19500	11300	0,32
SA 207 ZP	35	72	39,0	25,4	19	5,6	51,0	9,5	M10	25500	15300	0,47
SA 208 ZP	40	80	43,8	30,2	21	6,4	58,0	11,0	M10	32500	19800	0,62
SA 209 ZP	45	85	43,8	30,2	22	6,4	63,0	11,0	M10	32500	20400	0,70
SA 210 ZP	50	90	43,8	30,2	22	6,9	69,0	11,0	M10	35000	23200	0,77
SA 211 ZP	55	100	48,4	32,5	25	7,0	76,0	12,0	M10	43500	29000	1,06
SA 212 ZP	60	110	53,1	37,1	24	7,2	84,0	13,5	M10	52000	36000	1,40