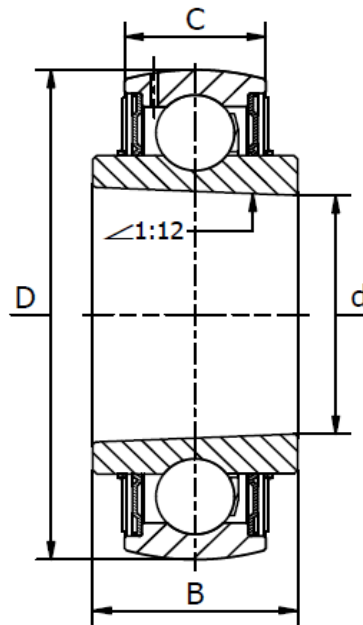




UK 300 Series - Radial Insert Ball Bearings

For adapter sleeve, lithium based NLGI 2/3 grease. Temperature range -30°C to +110°C.



Bearing No.	Dimensions (mm)				Basic load rating (N)		Adapter	Shaft diam. with adapter sleeve (mm)	Weight (kg)
	d	D	B	C	Dynamic C_r	Static C_{or}			
UK 305	25	62	26	20	21200	10600	H2305	20	0,48
UK 306	30	72	29	23	26700	14100	H2306	25	0,59
UK 307	35	80	33	25	33500	18000	H2307	30	0,74
UK 308	40	90	34	27	40500	22600	H2308	35	1,02
UK 309	45	100	37	29	53000	30000	H2309	40	1,38
UK 310	50	110	41	32	62000	36000	H2310	45	1,68
UK 311	55	120	44	34	71500	42500	H2311	50	2,06
UK 312	60	130	47	36	82000	49000	H2312	55	2,53
UK 313	65	140	49	39	92500	56000	H2313	60	3,08
UK 315	75	160	55	43	113000	72500	H2315	65	4,84
UK 316	80	170	58	45	123000	81000	H2316	70	5,75
UK 317	85	180	60	47	133000	90500	H2317	75	6,72
UK 318	90	190	64	49	143000	100000	H2318	80	7,88
UK 319	95	200	67	51	153000	111000	H2319	85	9,04
UK 320	100	215	73	55	173000	132000	H2320	90	11,10
UK 322	110	240	80	59	205000	169000	H2322	100	14,90
UK 324	120	260	86	64	207000	171000	H2324	110	18,00
UK 326	130	280	90	67	229000	198000	H2326	115	23,30
UK 328	140	300	95	71	253000	227000	H2328	125	28,80

Matching adapter sleeve catalogue:

<https://pti.eu/pdf/adapters/H2300.pdf>