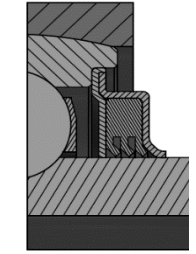
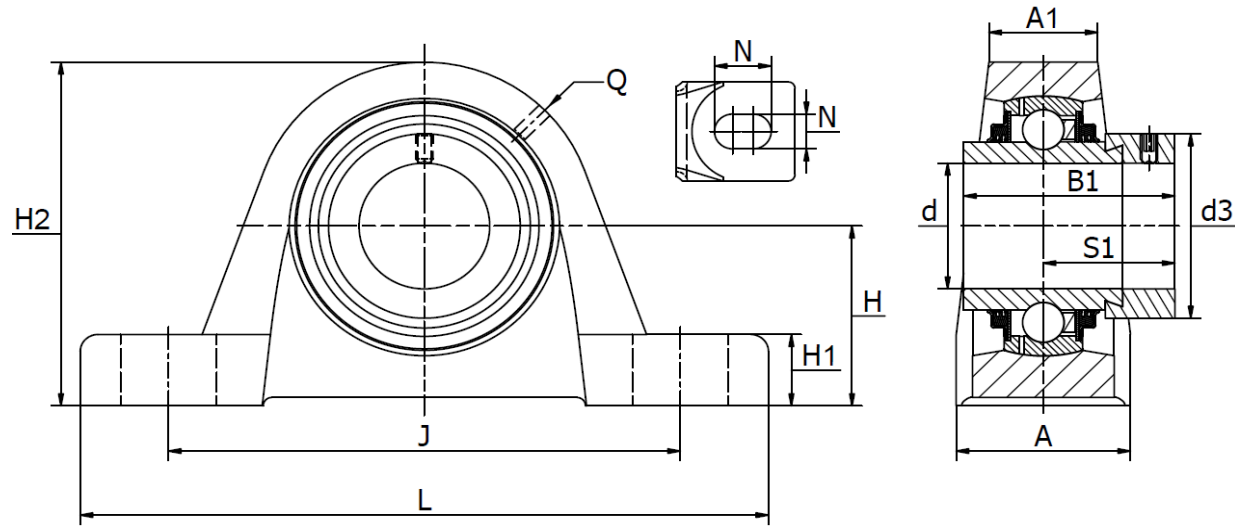




## SW .. T series (TASE) - Plummer block housing units

Cast iron housing, radial insert ball bearing with eccentric locking collar, R3 seals. Temperature range -30°C to +110°C



Tripple lip seal  
(Suffix R3)

Part No.	d mm	Dimensions (mm)										Bearing No.	Weight (kg)	Cover			
		L	H <sub>2</sub>	A	A <sub>1</sub>	B <sub>1</sub>	d <sub>3 max</sub>	H	H <sub>1</sub>	J	N				N <sub>1</sub>	Q	S <sub>1</sub>
SW 20 T-TASE20	20	130	64,0	32	19	43,7	33,0	33,3	14,5	97	11	19	R1/8	26,6	HC 204 R3	0,59	N/A
SW 25 T-TASE25	25	130	70,0	36	22	44,4	37,5	36,5	14,5	103	11	19	R1/8	26,9	HC 205 R3	0,70	KASK05
SW 30 T-TASE30	30	158	82,0	40	25	48,4	44,0	42,9	17,0	118	14	22	R1/8	30,1	HC 206 R3	1,11	KASK06
SW 35 T-TASE35	35	163	93,0	45	27	51,1	51,0	47,6	19,0	126	14	21	R1/8	32,3	HC 207 R3	1,60	N/A
SW 40 T-TASE40	40	179	99,0	48	30	56,3	58,0	49,2	19,0	138	14	26	R1/8	34,9	HC 208 R3	1,83	KASK08
SW 45 T-TASE45	45	192	107,0	48	32	56,3	63,0	54,0	21,5	150	14	29	R1/8	34,9	HC 209 R3	2,21	Cover Ø45
SW 50 T-TASE50	50	200	115,0	54	34	62,7	69,0	57,2	21,5	158	18	23	R1/8	38,1	HC 210 R3	2,70	KASK10
SW 55 T-TASE55	55	222	124,5	60	35	71,4	76,0	63,5	22,5	176	18	30	R1/8	43,6	HC 211 R3	3,40	N/A
SW 60 T-TASE60	60	240	140,0	60	42	77,7	84,0	69,9	25,0	190	18	28	R1/8	46,8	HC 212 R3	4,79	KASK12
SW 65 T-TASE65	65	260	156,0	65	44	66,0	96,0	79,4	27,5	203	22	28	R1/8	44,6	HC 213-214 R3	6,41	N/A
SW 70 T-TASE70	70	260	156,0	65	44	66,0	96,0	79,4	27,5	203	22	28	R1/8	44,6	HC 214 R3	6,15	N/A
SW 75 T-TASE75	75	265	164,0	66	44	67,1	100,0	82,5	27,5	217	22	28	R1/8	45,6	HC 215 R3	7,65	N/A
SW 80 T-TASE80	80	292	175,0	78	52	70,7	108,0	88,9	30,0	232	25	30	R1/8	47,6	HC 216 R3	8,65	N/A
SW 90 T-TASE90	90	327	200,0	88	52	69,6	118,0	101,6	33,0	262	27	36	R1/8	46,6	HC 218 R3	12,12	N/A