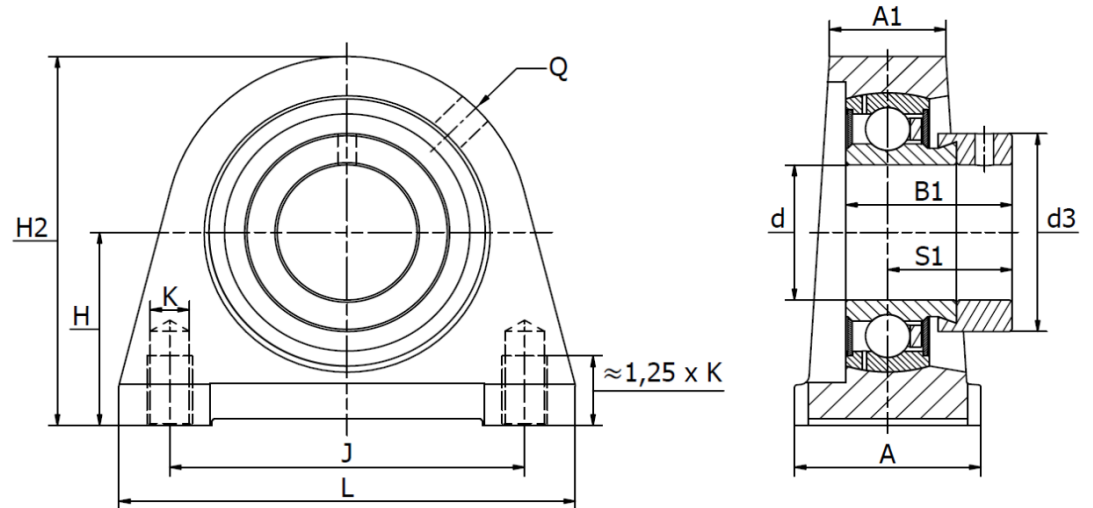




SWG .. Series (PSHE)

Cast iron housing, radial insert ball bearing with eccentric locking collar.
Temperature range -30°C to +110°C



Part No.	d mm	Dimensions (mm)											Bearing No.	Weight (kg)
		L	H ₂	A	A ₁	B ₁	d _{3 max}	H	J	K	Q	S ₁		
SWG 12	12	63	57,0	30	18	28,6	28,0	30,2	47,0	M8	M6	22,1	SA 201	0,44
SWG 15	15	63	57,0	30	18	28,6	28,0	30,2	47,0	M8	M6	22,1	SA 202	0,44
SWG 17	17	63	57,0	30	18	28,6	28,0	30,2	47,0	M8	M6	22,1	SA 203	0,44
SWG 20	20	65	64,0	32	19	31,0	33,0	33,3	50,8	M8	M6	23,5	SA 204	0,51
SWG 25	25	70	70,0	36	21	31,0	37,5	36,5	50,8	M10	Rp 1/8"	23,5	SA 205	0,60
SWG 30	30	98	82,0	40	25	35,7	44,0	42,9	76,2	M10	Rp 1/8"	26,7	SA 206	1,05
SWG 35	35	103	93,0	45	27	38,9	51,0	47,6	82,6	M10	Rp 1/8"	29,4	SA 207	1,44
SWG 40	40	116	99,0	48	30	43,7	58,0	49,2	88,9	M12	Rp 1/8"	32,7	SA 208	1,84
SWG 45	45	120	107,0	48	32	42,7	63,0	54,0	95,3	M12	Rp 1/8"	32,7	SA 209	2,14
SWG 50	50	135	115,0	54	34	43,7	69,0	57,2	101,6	M16	Rp 1/8"	32,7	SA 210	2,79
SWG 55	55	150	124,5	60	35	48,4	76,0	63,5	118,0	M16	Rp 1/8"	36,4	SA 211	2,91
SWG 60	60	150	140,0	60	42	53,1	84,0	69,9	118,0	M16	Rp 1/8"	39,6	SA 212	4,10