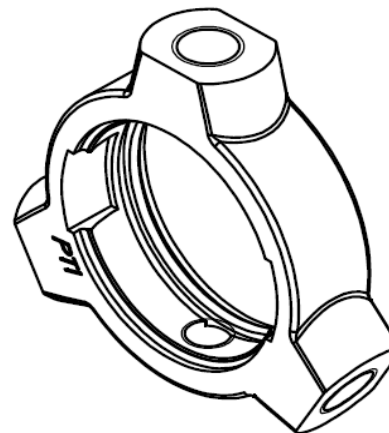
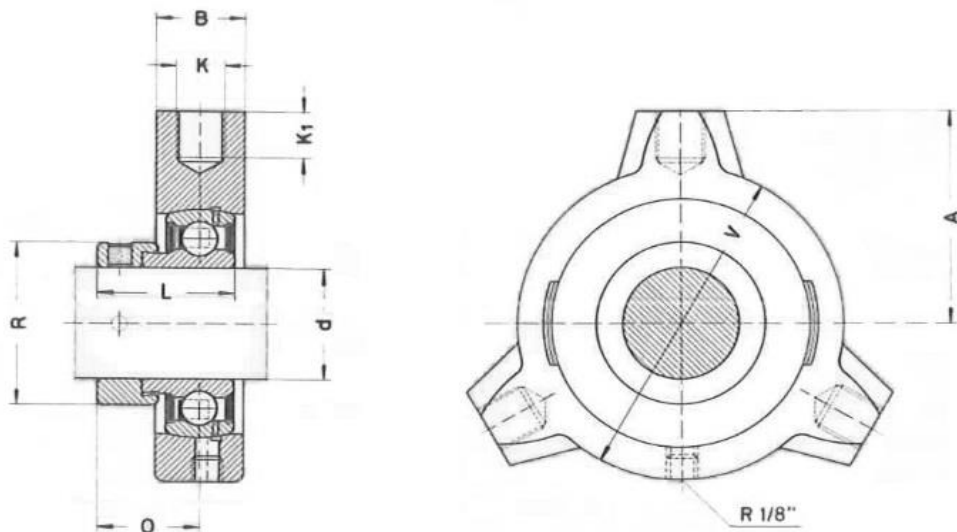




PGVE - Take-up housing units

cast iron housing, radial insert ball bearing with eccentric locking collar



Item No.	Dimensions (mm)									Mass (kg)	Radial load ratings (N)		Housing	Bearing
	d	A	B	K	K ₁	L	O	R _{max}	V		C dynamic	C ₀ static		
PGVE 20	20	38	20	R 1/4"	8	31	23,5	33	58	0,32	12800	6600	GVE 04	SA 204
PGVE 25	25	42	20	R 1/4"	8	31	23,5	37,5	65	0,55	14000	7800	GVE 05	SA 205
PGVE 30	30	50	22	R 1/4"	10	35,7	26,7	44	78	0,68	19500	11300	GVE 06	SA 206
PGVE 35	35	60	24	R 1/4"	15	38,9	29,4	51	90	1,04	25500	15300	GVE 07	SA 207
PGVE 40	40	67	26	R 3/8"	15	43,7	32,7	58	100	1,34	32500	19800	GVE 08	SA 208
PGVE 45	45	75	30	R 1/2"	15	43,7	32,7	63	108	1,69	32500	20400	GVE 09	SA 209
PGVE 50	50	80	30	R 1/2"	15	43,7	32,7	69	115	2,27	35000	23200	GVE 10	SA 210