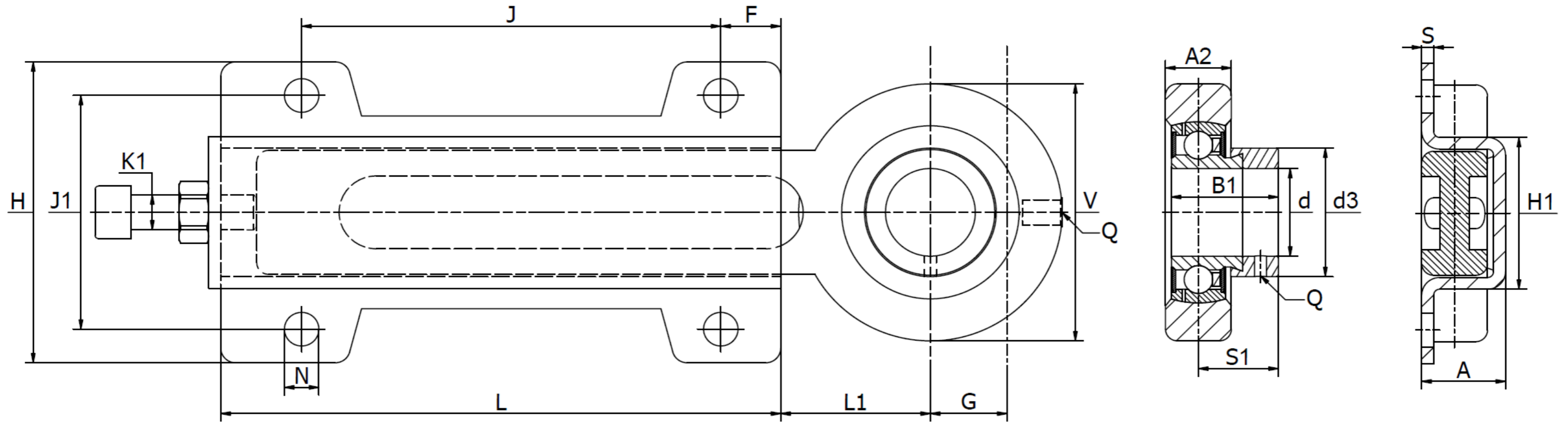


PTI PHUSE - Take-up housing units

Cast iron and sheet steel housing, radial insert ball bearing with eccentric locking collar. Temperature range -30°C to +110°C



Product No.	Dimensions (mm)																			Load rating housing (N) C_{0rG}	Basic load Rating (N)		Bearing No.	Weight (kg)	Cover
	d	H	A	A ₂	B ₁	d _{3max}	F	G	H ₁	J	J ₁	K ₁	L	L ₁	N	Q	S	S ₁	V		Dynamic C_r	Static C_{0r}			
PHUSE 25	25	103	28	22	31,0	37,5	20	65	52	140	80	M12	187	50	11,5	Rp 1/8	4	23,5	78	7800	14000	7800	SA 205	2,07	N/A
PHUSE 30	30	103	28	22	35,8	44,0	20	65	52	140	80	M12	187	50	11,5	Rp 1/8	4	26,7	88	11300	19500	11300	SA 206	2,22	N/A
PHUSE 35	35	103	28	22	39,0	51,0	20	65	52	140	80	M12	187	50	11,5	Rp 1/8	4	29,4	98	15300	25500	15300	SA 207	2,46	N/A
PHUSE 40	40	130	36	30	43,8	58,0	20	80	60	180	100	M16	256	60	14,0	Rp 1/8	4	32,7	108	19800	32500	19800	SA 208	4,89	KASK08
PHUSE 50	50	130	36	30	43,8	69,0	20	80	60	180	100	M16	256	60	14,0	Rp 1/8	4	32,7	120	23200	35000	23200	SA 210	5,25	N/A