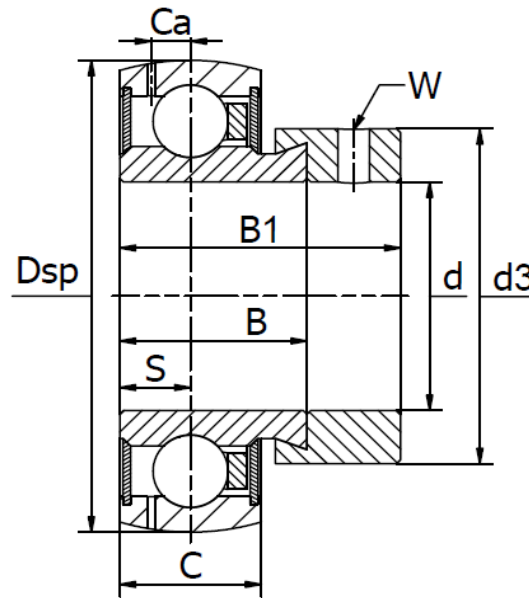
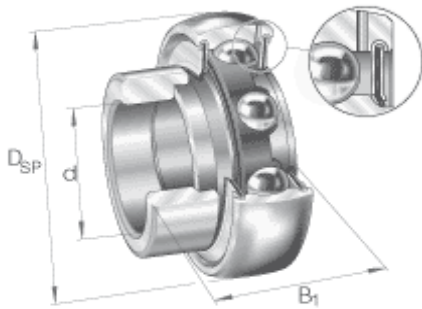




SA 200 SS Series

Stainless steel, eccentric collar lock, operating temperature range -30°C to +110°C.
FDA & NSF approved grease.



Bearing no.	Dimensions (mm)									Basic load rating (N)		Weight (kg)
	d	D _{sp}	B ₁	B	C	C _a	d ₃	S	W	C _r	C _{or}	
SA 201 SS	12	40	28,6	19,0	12	3,4	28,0	6,5	3,0	8.400	4.750	0,13
SA 202 SS	15	40	28,6	19,0	12	3,4	28,0	6,5	3,0	8.400	4.750	0,11
SA 203 SS	17	40	28,6	19,0	12	3,4	28,0	6,5	3,0	8.400	4.750	0,10
SA 204 SS	20	47	31,0	21,4	14	4,0	33,0	7,5	3,0	10.900	6.600	0,16
SA 205 SS	25	52	31,0	21,4	15	3,9	37,5	7,5	3,0	12.000	7.800	0,19
SA 206 SS	30	62	35,8	23,8	18	4,7	44,0	9,0	4,0	16.700	11.300	0,32
SA 207 SS	35	72	39,0	25,4	19	5,6	51,0	9,5	5,0	21.800	15.300	0,47
SA 208 SS	40	80	43,8	30,2	21	6,4	58,0	11,0	5,0	27.800	19.800	0,62
SA 209 SS	45	85	43,8	30,2	22	6,4	63,0	11,0	5,0	27.800	20.400	0,70
SA 210 SS	50	90	43,8	30,2	22	6,9	69,0	11,0	5,0	29.900	23.200	0,77
SA 211 SS	55	100	48,4	32,5	25	7,0	76,0	12,0	5,0	37.200	29.000	1,06
SA 212 SS	60	110	53,1	37,1	27	7,2	84,0	13,5	5,0	44.400	36.000	1,40

Materials:

Inner & Outer Races: AISI 420-440 Stainless

Cage: AISI 302 Stainless

Balls: AISI 420-440 Stainless

Seals: Rubber & AISI 302 Stainless

Set Screws: AISI 420 Stainless

Grease Nipple: AISI 304

Grease: Food Grade FDA & NSF approved