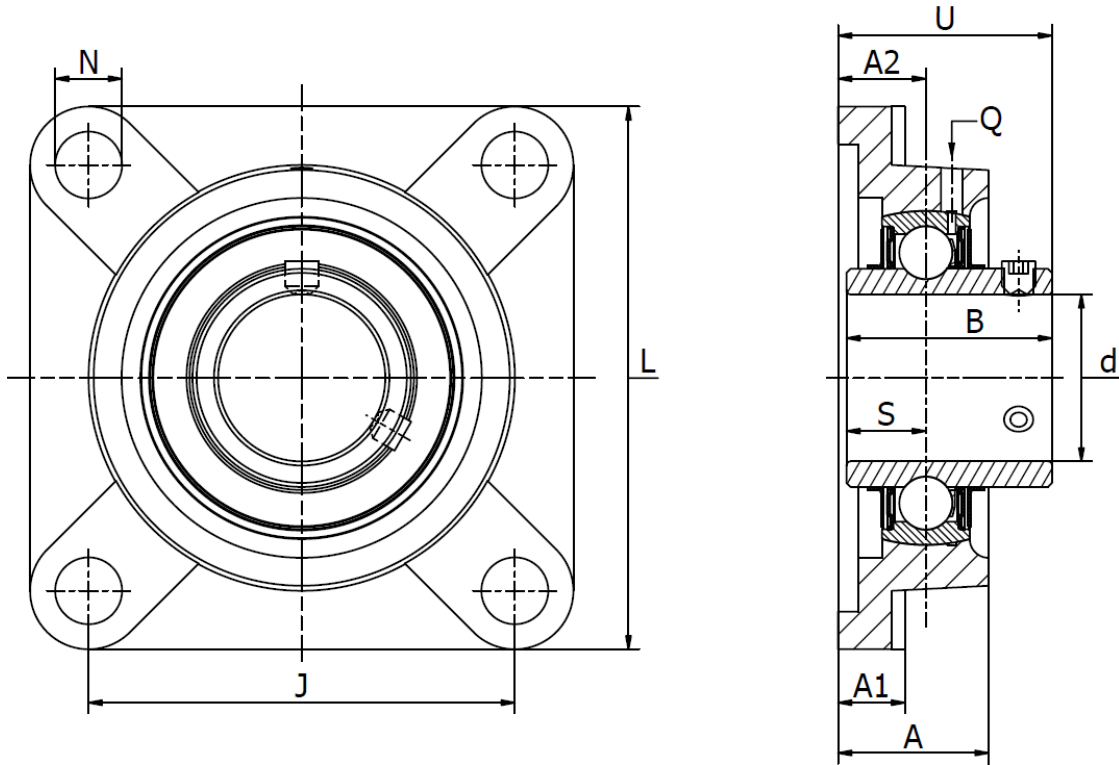




UCF 200 SS - Stainless Steel 4-Bolt Flange Units

Set Screw Locking, normal duty, also available in a solid base version, FDA & NSF.



Part No.	d mm	Dimensions (mm)										Bolt Size	Weight (kg)
		L	J	B	A ₂	A ₁	A	U	N	S	Q		
UCF 201 SS	12	86	64	31,0	15	11,0	25,5	33,3	12,0	12,7	M6	M10	0,61
UCF 202 SS	15	86	64	31,0	15	11,0	25,5	33,3	12,0	12,7	M6	M10	0,61
UCF 203 SS	17	86	64	31,0	15	11,0	25,5	33,3	12,0	12,7	M6	M10	0,61
UCF 204 SS	20	86	64	31,0	15	11,0	25,5	33,3	12,0	12,7	M6	M10	0,61
UCF 205 SS	25	95	70	34,0	16	13,0	27,0	35,7	12,0	14,3	M6	M10	0,80
UCF 206 SS	30	108	83	38,0	18	14,3	31,0	40,2	12,0	15,9	M6	M10	1,07
UCF 207 SS	35	117	92	41,5	19	15,0	34,0	44,4	14,0	17,5	M6	M12	1,40
UCF 208 SS	40	130	102	49,2	21	15,0	36,0	51,2	16,0	19,0	M6	M14	1,80
UCF 209 SS	45	137	105	49,2	22	16,0	38,0	52,2	16,0	19,0	M6	M14	2,20
UCF 210 SS	50	143	111	51,6	22	16,0	40,0	54,6	16,0	19,0	M6	M14	2,40
UCF 211 SS	55	162	130	55,5	25	18,0	43,0	58,4	19,0	22,2	M6	M16	3,50
UCF 212 SS	60	175	143	65,0	29	19,5	48,0	68,7	19,0	25,4	M6	M16	4,20
UCF 213 SS	65	187	149	65,0	30	22,0	50,0	69,7	19,0	25,4	M6	M16	5,30
UCF 214 SS	70	193	152	74,6	31	22,0	54,0	75,4	19,0	30,2	M6	M16	5,90
UCF 215 SS	75	200	159	78,0	34	22,0	56,0	78,5	19,0	33,3	M6	M16	6,30
UCF 216 SS	80	208	165	82,5	34	22,0	57,0	83,3	23,0	33,3	M6	M20	7,30

Add suffix **SOLID** to order the solid base version.

Bearing Inserts:

Inner & Outer Races: AISI 420-440 Stainless

Cage: AISI 302 Stainless

Balls: AISI 420-440 Stainless

Seals: Rubber & AISI 302 Stainless

Set Screws: AISI 420 Stainless

Grease Nipple: AISI 304

Grease: Mobil FM 222 Food Grade FDA & NSF approved

Housing:

AISI 304 Stainless, also available in a solid base version.

The solid base version has no cavities in the bottom where dirt can collect over time, thus making it easier to keep clean.