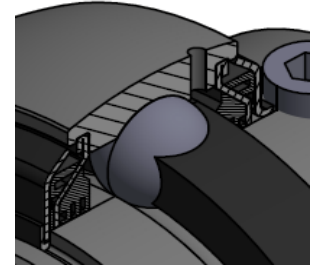


R3 Lip Seal



R6 Lip Seal

Shaft diameter	Maximum speed (RPM) with shaft tolerance					Seal Type (RPM)
	d (mm)	h6	h7	h8	h9	h11
12	9500	6000	4300	1500	950	-
15	9500	6000	4300	1500	950	-
17	9500	6000	4300	1500	950	-
20	8500	5300	3800	1300	850	960
25	7000	4500	3200	1000	700	830
30	6300	4000	2800	900	630	750
35	5300	3400	2200	750	530	690
40	4800	3000	1900	670	480	640
45	4300	2600	1700	600	430	570
50	4000	2400	1600	560	400	520
55	3600	2000	1400	500	360	490
60	3400	1900	1300	480	340	460
65	3000	1700	1100	430	300	440
70	2800	1600	1000	400	280	410
75	2600	1500	950	380	260	380
80	2400	1400	900	360	240	360
90	2000	1200	800	320	200	340
100	1900	1100	750	300	190	-
120	1800	1000	720	280	180	-
130	1100	700	550	220	110	-
140	900	600	450	200	100	-

Bearings with added seals, i.ex. R3 & R6, have to be operated at lower RPM due to the added friction of the seals. The max. RPM is shown in the right column, use whatever value is lowest, seal or tolerance.