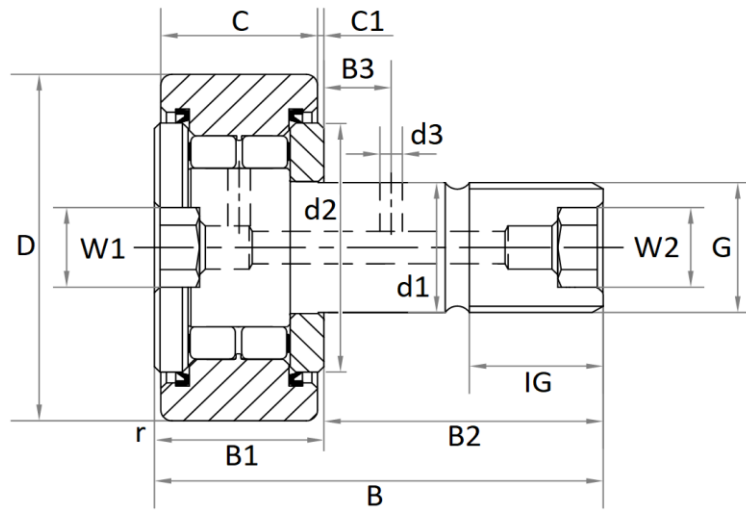




PWKR..2RS Stud type track rollers
with axial guidance, with lip seals, full complement cylindrical roller set



Item No.	Dimensions (mm)													Mass (g)	M _A (Nm)	Load rating (N)			n _{DG} (1/min)		
	D	d1	B	B1 max	B2	B3	C	C1	d2	d3	G	IG	r _{min}			W1	W2	C _{r w}		C _{0r w}	C _{ur w}
PWKR35-2RS	35	16	52	19,5	32,5	7,8	18	0,8	20	3	M16X1,5	17	0,6	8	8	164	58	12600	14600	1760	6000
PWKR40-2RS	40	18	58	21,6	36,5	8	20	0,8	22	3	M18X1,5	19	1	8	8	242	87	14300	17900	2160	5000
PWKR47-2RS	47	20	66	25,6	40,5	9	24	0,8	27	4	M20X1,5	21	1	10	10	380	120	24500	30500	3750	3800
PWKR52-2RS	52	20	66	25,6	40,5	9	24	0,8	31	4	M20X1,5	21	1	10	10	450	120	25000	33000	4100	3800
PWKR62-2RS	62	24	80	30,6	49,5	11	29	0,8	38	4	M24X1,5	25	1	14	14	795	220	35000	45500	5800	2200
PWKR72-2RS	72	24	80	30,5	49,5	11	29	0,8	44	4	M24X1,5	25	1	14	14	1020	220	38500	54000	6900	2200
PWKR80-2RS	80	30	100	37,6	63	15	35	1	47	4	M30X1,5	32	1,1	14	14	1600	450	56000	79000	10600	1800
PWKR90-2RS	90	30	100	37,6	63	15	35	1	47	4	M30X1,5	32	1,1	14	14	1960	450	62000	92000	12200	1800

Legend:

- d₁** Tolerance: h7
- W** Nominal dimension for hexagonal socket
- M_A** Nut tightening torque
- C_{r w}** Effective dynamic load rating as track roller (radial)
- C_{0r w}** Effective static load rating as track roller (radial)
- C_{ur w}** Fatigue limit load
- n_{DG}** Speed (with continuous operation and grease lubrication)

Lubrication nipple:

Every item is shipped with a drive fit lubrication nipple and a plug.

